

# Recombinant Human Ubiquitin-conjugating enzyme E2 B/UBE2B protein

Catalog No.: RP10035LQ **Recombinant**

## Sequence Information

Species	Gene ID	Swiss Prot
Human	7320	P63146

### Tags

His Tag

### Synonyms

UBE2B; E2-17kDa; HHR6B; HR6B;  
RAD6B; UBC2; ubiquitin-conjugating  
enzyme E2  
B;E2-17kDa;HHR6B;HR6B;RAD6B;UBC2

## Product Information

Source	Purification
<i>E. coli</i>	~95% by SDS-PAGE

### Endotoxin

### Formulation

20 mM Tris, 150 mM NaCl, 2 mM βME,  
10% Glycerol

### Reconstitution

## Background

Ube2B is an E2 enzyme, which is part of the E1, E2, and E3 cascade responsible for ubiquitination of protein substrates. It shares 95% amino acid sequence identity with Ube2A. One function of Ube2B involves the formation of Ube2B/ Rad18 (an E3 enzyme) complex to monoubiquitinate proliferating cell nuclear antigen (PCNA) thus activating it to repair DNA damage. The Ube2B/Rad18 complex is recruited to the replication fork of the damaged DNA to start the post-replication repair.

## Basic Information

### Description

### Bio-Activity

### Storage

This product is stable at  $\leq -70^{\circ}\text{C}$  for up to 6 months from the date of receipt. For optimal storage, aliquot into smaller quantities after centrifugation and store at recommended temperature. Avoid repeated freeze/thaw cycles.

## Contact

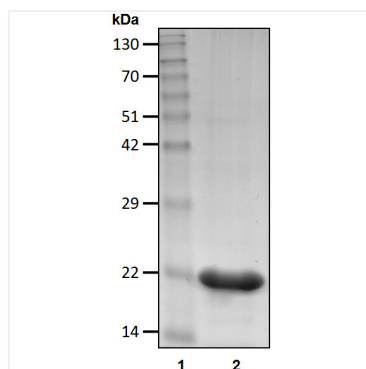
☎ | 400-999-6126

✉ | [cn.market@abclonal.com.cn](mailto:cn.market@abclonal.com.cn)

🌐 | [www.abclonal.com.cn](http://www.abclonal.com.cn)

## Validation Data

---



Recombinant human Ubiquitin-conjugating enzyme E2 B/UBE2B protein was determined by SDS-PAGE with Coomassie Blue.