

# Recombinant Human Glutaredoxin 1/GRX1 Protein

Catalog No.: RP03539 **Recombinant**

## Sequence Information

Species	Gene ID	Swiss Prot
Human	2745	P35754

### Tags

N-His

### Synonyms

GLRX; GRX; Glutaredoxin-1;  
Thioltransferase-1; TTase-1

## Product Information

Source	Purification
<i>E. coli</i>	≥ 85 % as determined by SDS-PAGE.

Calculated MW	Observed MW
13.6 KDa	10-15 KDa

### Endotoxin

Please contact us for more information.

### Formulation

Lyophilized from sterile 50mM Tris, 10% Glycerol, 1mM DTT, pH 8.0. Please contact us for any concerns or special requirements. Normally 5 % - 8 % trehalose, mannitol and 0.01% Tween80 are added as protectants before lyophilization.

### Reconstitution

Centrifuge the vial before opening. Reconstitute to a concentration of 0.1-0.5 mg/mL in sterile distilled water. Avoid vortex or vigorously pipetting the protein. For long term storage, it is recommended to add a carrier protein or stabilizer (e.g. 0.1% BSA, 5% HSA, 10% FBS or 5% Trehalose), and aliquot the reconstituted protein solution to minimize freeze-thaw cycles.

## Background

Glutaredoxin 1/GRX1, belongs to the glutaredoxin family. Glutaredoxins are small redox enzymes that use glutathione as a cofactor. Glutaredoxins are oxidized by substrates, and reduced non-enzymatically by glutathione. Glutaredoxin-1 functions as an electron carrier in the glutathione-dependent synthesis of deoxyribonucleotides by the enzyme ribonucleotide reductase. Glutaredoxin-1 exists in either a reduced or an oxidized form. Glutaredoxins function as electron carriers in the glutathione-dependent synthesis of deoxyribonucleotides by the enzyme ribonucleotide reductase.

## Basic Information

### Description


Recombinant Human Glutaredoxin 1/GRX1 Protein is produced by *E. coli* cells expression system. The target protein is expressed with sequence (Met1-Gln106) of Human Glutaredoxin 1/GRX1 (Accession # P35754) fused with His tag at the N-terminus.

### Bio-Activity

### Storage

Store at -20°C. Store the lyophilized protein at -20°C to -80 °C up to 1 year from the date of receipt. After reconstitution, the protein solution is stable at -20°C for 3 months, at 2-8°C for up to 1 week. Avoid repeated freeze/thaw cycles.

## Contact

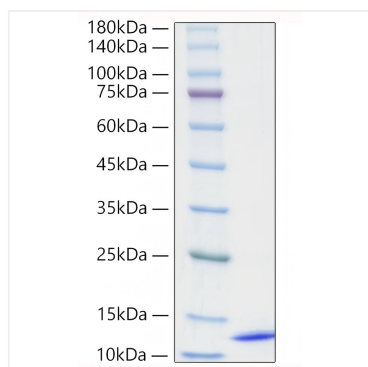
 | 400-999-6126

✉ | [cn.market@abclonal.com.cn](mailto:cn.market@abclonal.com.cn)

🌐 | [www.abclonal.com.cn](http://www.abclonal.com.cn)

## Validation Data

---



Recombinant Human Glutaredoxin 1/GRX1  
Protein was determined by SDS-PAGE under  
reducing conditions with Coomassie Blue.