

Catalog No.: RP03445LQ **Recombinant**

Species	Gene ID	Swiss Prot
Human	5298	O9UBF8

Tags
N-His-GST

PI4KB; PIK4CB; NPIK; PI4K92; PI4KIII;
PI4K-beta; PI4Kbeta; PtdIns 4-kinase
beta; Phosphatidylinositol 4-kinase beta

Source	Purification
Baculovirus-Insect Cells	≥ 85% as determined by SDS-PAGE; ≥ 85% as determined by HPLC.

Calculated MW	Observed MW
119.0 kDa	90-120 kDa

< 1 EU/μg of the protein by LAL method.

Supplied as a 0.22 μ m filtered solution in 50 mM Tris-HCl, 150 mM NaCl, 5% glycerol, 1 mM DTT. (pH 7.5). Contact us for customized product form or formulation.

Please use running water to thaw it quickly.

 | 400-999-6126

 | cn.market@abclonal.com.cn

 | www.abclonal.com.cn

Phosphatidylinositol 4-kinase beta is an enzyme that in humans is encoded by the PI4KB gene. PI4KB is a soluble protein shuttling between the cytoplasm and the nucleus, and can be recruited to the membranes of the Golgi system via protein-protein interactions, e.g. with small GTP binding proteins Arf1 and Rab11, or a Golgi adaptor protein ACBD3. PI4KB can be phosphorylated by the protein kinase D, which promotes the interaction with 14-3-3 proteins and stabilization of the protein in its active conformation.

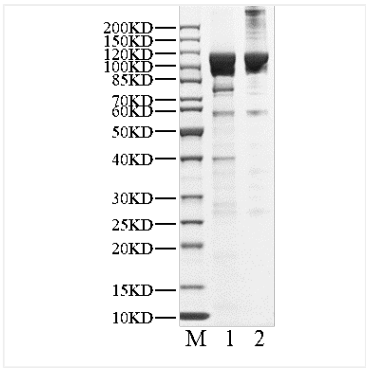
Recombinant Human PIK4CB/PI4KB Kinase is produced by Baculovirus-Insect Cells expression system. The target protein is expressed with sequence (Gly2-Met816) of Human PI4KB (Accession #Q9UBF8) fused with a N-His-GST tag.

The activity of PI4KB is based on the MSA technology, and the content and ratio of the substrate and the product are directly separated and detected in real time and dynamically by the different migration rates of the substrate and the product after the enzymatic reaction.

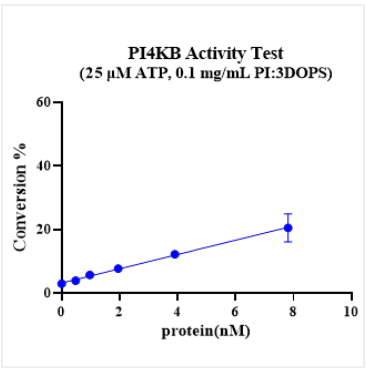
Store at -70°C. This product is stable at $\leq -70^{\circ}\text{C}$ for up to 1 year from the date of receipt. For optimal storage, aliquot into smaller quantities after centrifugation and store at recommended temperature.

Aliquots below 10 μ L are not advisable. Product must not be stored in diluted solutions. Avoid repeated freeze-thaw cycles.

Validation Data



Recombinant Human PIK4CB/PI4KB Kinase was resolved with SDS-PAGE under reducing (Lane 1) and non-reducing (Lane 2) conditions.



The activity of PI4KB is based on the MSA technology, and the content and ratio of the substrate and the product are directly separated and detected in real time and dynamically by the different migration rates of the substrate and the product after the enzymatic reaction.