

**Catalog No.: RP03442LQ** **Recombinant**

Species	Gene ID	Swiss Prot
Human	53944	O9HCP0

## N-GST

**Synonyms**  
CSNK1G1; CKI-gamma 1; CK1γ1; Casein kinase I isoform gamma-1

<b>Source</b>	<b>Purification</b>
Baculovirus-Insect Cells	≥ 90 % as determined by SDS-PAGE; ≥ 90 % as determined by HPLC.

## 75.0 kDa      70-85 kDa

< 1 EU/μg of the protein by LAL method.

Supplied as a 0.22 µm filtered solution in 50 mM Tris-HCl, 200 mM NaCl, 20% glycerol, 1 mM DTT. (pH 7.5).  
Contact us for customized product form or formulation.

Please use running water to thaw it quickly.

 | 400-999-6126

 | [cn.market@abclonal.com.cn](mailto:cn.market@abclonal.com.cn)

 | [www.abclonal.com.cn](http://www.abclonal.com.cn)

Casein kinase I isoform gamma-1 is a member of the CK1 (formerly named casein kinase 1) family of serine/threonine specific eukaryotic protein kinases encompassing seven distinct isoforms (CK1 $\alpha$ ,  $\gamma$ 1-3,  $\delta$ ,  $\epsilon$ ) as well as various post-transcriptionally processed splice variants (transcription variants, TVs) in mammals. Like eukaryotic protein kinases (ePKs) the different isoforms of the CK1 family consist of a N-terminal and a C-terminal lobe (N- and C-lobe, respectively), which are connected via a hinge region. The gamma-1 isoform is involved in growth and morphogenesis of eukaryotic cells.

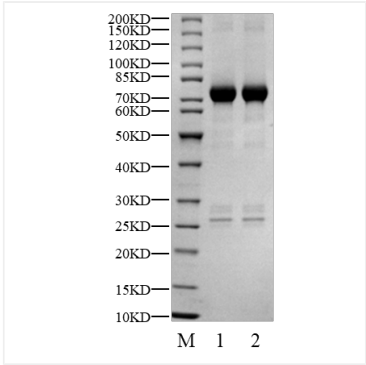
Recombinant Human CK1-gamma 1/CSNK1G1 Kinase is produced by Baculovirus-Insect Cells expression system. The target protein is expressed with sequence (Asp2-Lys422) of Human CSNK1G1 (Accession #Q9HCP0) fused with a N-GST tag.

The activity of CSNK1G1 is based on the MSA technology, and the content and ratio of the substrate and the product are directly separated and detected in real time and dynamically by the different migration rates of the substrate and the product after the enzymatic reaction.

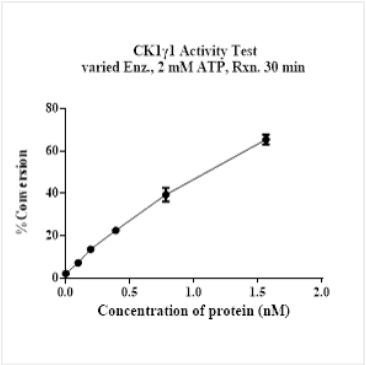
Store at -70°C. This product is stable at  $\leq -70^{\circ}\text{C}$  for up to 1 year from the date of receipt. For optimal storage, aliquot into smaller quantities after centrifugation and store at recommended temperature.

Aliquots below 10 µl are not advisable. Product must not be stored in diluted solutions. Avoid repeated freeze-thaw cycles.

Validation Data



Recombinant Human CK1-gamma 1/CSNK1G1 Kinase was resolved with SDS-PAGE under reducing (Lane 1) and non-reducing (Lane 2) conditions.



The activity of CSNK1G1 is based on the MSA technology, and the content and ratio of the substrate and the product are directly separated and detected in real time and dynamically by the different migration rates of the substrate and the product after the enzymatic reaction.