

Catalog No.: RP03413LQ **Recombinant**

Species	Gene ID	Swiss Prot
Human	5580	O05655

Tags
N-GST

PRKCD; PKCD; PKC δ ; SDK1; Sphingosine-dependent protein kinase-1; nPKC-delta; Tyrosine-protein kinase PRKCD; Protein kinase C delta type

Source	Purification
Baculovirus-Insect Cells	≥ 85% as determined by SDS-PAGE; ≥ 85% as determined by HPLC.

Calculated MW	Observed MW
104.0 kDa	85-110 kDa

< 1 EU/μg of the protein by LAL method.

Supplied as a 0.22 µm filtered solution in 50 mM Tris-HCl, 200 mM NaCl, 20% glycerol, 1 mM DTT. (pH 7.5). Contact us for customized product form or formulation.

Please use running water to thaw it quickly.

 | 400-999-6126

 | cn.market@abclonal.com.cn

 | www.abclonal.com.cn

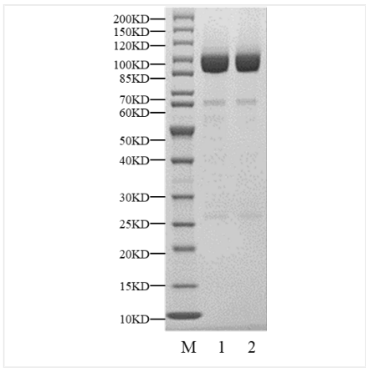
Protein kinase C delta type (or PKC- δ) is an enzyme that in humans is encoded by the *PRKCD* gene. Protein kinase C (PKC) is a family of serine- and threonine-specific protein kinases that can be activated by the second messenger diacylglycerol. PKC family members phosphorylate a wide variety of protein targets and are known to be involved in diverse cellular signaling pathways. PKC family members also serve as major receptors for phorbol esters, a class of tumor promoters. Each member of the PKC family has a specific expression profile and is believed to play distinct roles in cells. The protein encoded by this gene is one of the PKC family members. Studies both in human and mice demonstrate that this kinase is involved in B cell signaling and in the regulation of growth, apoptosis, and differentiation of a variety of cell types. Protein kinase C delta is also regulated by phosphorylation on various serine/threonine (e.g. T50, T141, S304, T451, T505, S506, T507, S643, S664) and tyrosine residues including Y311 (by SRC).

Recombinant Human PKC delta/PRKCD Kinase is produced by Baculovirus-Insect Cells expression system. The target protein is expressed with sequence (Ala2-Asp676) of Human PRKCD (Accession #Q05655) fused with a N-GST tag.

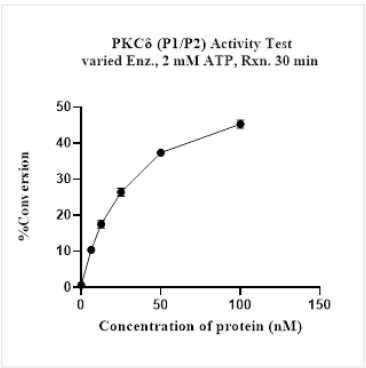
The activity of PRKCD is based on the MSA technology, and the content and ratio of the substrate and the product are directly separated and detected in real time and dynamically by the different migration rates of the substrate and the product after the enzymatic reaction.

Store at -70°C. This product is stable at $\leq -70^{\circ}\text{C}$ for up to 1 year from the date of receipt. For optimal storage, aliquot into smaller quantities after centrifugation and store at recommended temperature. Aliquots below 10 μL are not advisable. Product must not be stored in diluted solutions. Avoid repeated freeze-thaw cycles. Avoid repeated freeze/thaw cycles.

Validation Data



Recombinant Human PKC delta/PRKCD Kinase was resolved with SDS-PAGE under reducing (Lane 1) and non-reducing (Lane 2) conditions.



The activity of PRKCD is based on the MSA technology, and the content and ratio of the substrate and the product are directly separated and detected in real time and dynamically by the different migration rates of the substrate and the product after the enzymatic reaction.