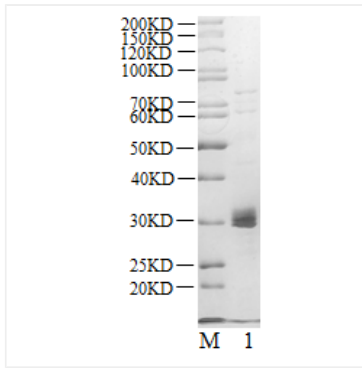
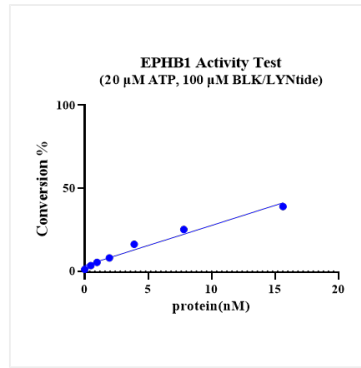


Validation Data



Recombinant Human EphB1/EPHT2 Kinase was resolved with SDS-PAGE under reducing (Lane 1) conditions.



The activity of EPHB1 is based on the ADP-GLO kinase activity assay quantifies kinase activity by measuring the conversion of ATP to ADP catalyzed by the kinase. Specific reagents are used to convert the ADP in the reaction back to ATP, resulting in the production of a luminescent signal.