

Catalog No.: RP03405LQ **Recombinant**

| Species | Gene ID | Swiss Prot |
|---------|---------|------------|
| Human | 1454 | P49674 |

Tags
N-GST

Synonyms
CSNK1E; CKI-epsilon; CKIε; CK1ε; CK1e;
Casein kinase I isoform epsilon

| Source | Purification |
|--------------------------|---|
| Baculovirus-Insect Cells | ≥ 80 % as determined by SDS-PAGE; ≥ 80 % as determined by HPLC. |

| Calculated MW | Observed MW |
|---------------|-------------|
| 73.8 kDa | 70-80 kDa |

< 1 EU/μg of the protein by LAL method.

Supplied as a 0.22 µm filtered solution in 50 mM Tris-HCl, 200 mM NaCl, 20% glycerol, 5 mM DTT, 0.1M Trehalose. (pH 7.5). Contact us for customized product form or formulation.

Please use running water to thaw it quickly.

 | 400-999-6126

 | cn.market@abclonal.com.cn

 | www.abclonal.com.cn

Casein kinase I isoform epsilon is an enzyme that in humans is encoded by the CSNK1E gene. The protein encoded by this gene is a serine/threonine protein kinase and a member of the casein kinase I protein family, whose members have been implicated in the control of cytoplasmic and nuclear processes, including DNA replication and repair. The encoded protein is found in the cytoplasm as a monomer and can phosphorylate a variety of proteins, including itself. This protein has been shown to phosphorylate proteins of the Period family of circadian rhythm proteins. A homolog of this mammalian protein can be found in *Drosophila melanogaster*. Known as doubletime, this protein also plays a role in the phosphorylation of proteins involved in circadian rhythms. Two transcript variants encoding the same protein have been found for this gene. CSNK1E has been shown to interact with PER1 and AXIN1.

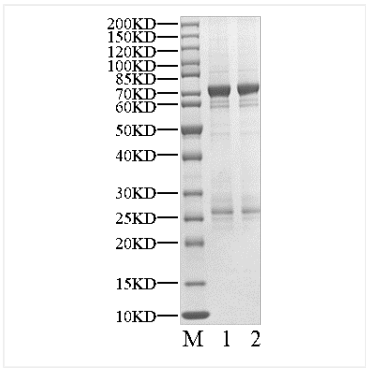
Recombinant Human CK1-epsilon/CSNK1E Kinase is produced by Baculovirus-Insect Cells expression system. The target protein is expressed with sequence (Glu2-Lys416) of Human CSNK1E (Accession #P49674) fused with a N-GST tag.

The activity of CK1 ϵ is based on the MSA technology, and the content and ratio of the substrate and the product are directly separated and detected in real time and dynamically by the different migration rates of the substrate and the product after the enzymatic reaction.

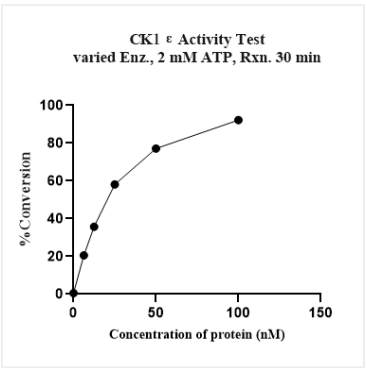
Store at -70°C. This product is stable at $\leq -70^{\circ}\text{C}$ for up to 1 year from the date of receipt. For optimal storage, aliquot into smaller quantities after centrifugation and store at recommended temperature.

Aliquots below 10 μ L are not advisable. Product must not be stored in diluted solutions. Avoid repeated freeze-thaw cycles.

Validation Data



Recombinant Human CK1-epsilon/CSNK1E Kinase was resolved with SDS-PAGE under reducing (Lane 1) and non-reducing (Lane 2) conditions.



The activity of CK1ε is based on the MSA technology, and the content and ratio of the substrate and the product are directly separated and detected in real time and dynamically by the different migration rates of the substrate and the product after the enzymatic reaction.