

Catalog No.: RP03372LQ **Recombinant**

Species	Gene ID	Swiss Prot
Human	5579	P05771-1

Tags
N-GST

PRKCB; PKCB; PRKCB1; PKC β 1; PKC-B;
PKC-beta; Protein kinase C beta type

Source	Purification
Baculovirus-Insect Cells	≥ 85% as determined by SDS-PAGE; ≥ 85% as determined by HPLC.

Calculated MW	Observed MW
103.4 kDa	85-110 kDa

< 1 EU/μg of the protein by LAL method.

Supplied as a 0.22 μ m filtered solution in 50 mM Tris-HCl, 150 mM NaCl, 5% glycerol, 5 mM DTT, 0.1 M Trehalose. (pH 7.5). Contact us for customized product form or formulation.

Please use running water to thaw it quickly.

 | 400-999-6126

 | cn.market@abclonal.com.cn

 | www.abclonal.com.cn

Protein kinase C beta type is an enzyme that in humans is encoded by the PRKCB gene. PRKCB1 has been shown to interact with RIPK4, beta adrenergic receptor kinase, PDLIM5 and GNB2L1. Protein kinase C (PKC) is a family of serine- and threonine-specific protein kinases that can be activated by calcium and second messenger diacylglycerol. PKC family members phosphorylate a wide variety of protein targets and are known to be involved in diverse cellular signaling pathways. This protein kinase is expressed solely in the brain and spinal cord and its localization is restricted to neurons. Knockout studies in mice also suggest that this kinase may be involved in neuropathic pain development. Defects in this protein have been associated with neurodegenerative disorder.

Recombinant Human PKC beta/PRKCB1 Kinase is produced by Baculovirus-Insect Cells expression system. The target protein is expressed with sequence (Ala2-Val671) of Human PRKCB (Accession #P05771-1) fused with a N-GST tag.

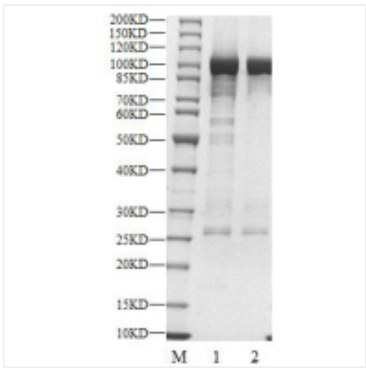
The activity of PKC β 1 is based on the MSA technology, and the content and ratio of the substrate and the product are directly separated and detected in real time and dynamically by the different migration rates of the substrate and the product after the enzymatic reaction.

Store at -70°C. This product is stable at $\leq -70^{\circ}\text{C}$ for up to 1 year from the date of receipt. For optimal storage, aliquot into smaller quantities after centrifugation and store at recommended temperature.

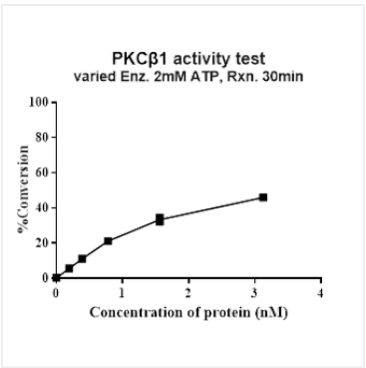
Aliquots below 10 μ L are not advisable. Product must not be stored in diluted solutions. Avoid repeated freeze-thaw cycles.

Avoid repeated freeze/thaw cycles.

Validation Data



Recombinant Human PKC beta/PRKCB1 Kinase was resolved with SDS-PAGE under reducing (Lane 1) and non-reducing (Lane 2) conditions.



The activity of PKCβ1 is based on the MSA technology, and the content and ratio of the substrate and the product are directly separated and detected in real time and dynamically by the different migration rates of the substrate and the product after the enzymatic reaction.