

Catalog No.: RP03283 **Recombinant**

Species	Gene ID	Swiss Prot
Mouse	12511	O91WN5

C-His

CD6 antigen: Cd6; CD6

Source	Purification
HEK293 cells	≥ 90 % as determined by SDS-PAGE

Calculated MW	Observed MW
42.6 kDa	60-70 kDa

< 1 EU/μg of the protein by LAL method.

Lyophilized from a 0.22 μ m filtered solution of PBS, pH 7.4. Contact us for customized product form or formulation.

Centrifuge the vial before opening. Reconstitute to a concentration of 0.1-0.5 mg/mL in sterile distilled water. Avoid vortex or vigorously pipetting the protein. For long term storage, it is recommended to add a carrier protein or stabilizer (e.g. 0.1% BSA, 5% HSA, 10% FBS or 5% Trehalose), and aliquot the reconstituted protein solution to minimize free-thaw cycles.

 | 400-999-6126

 | cn.market@abclonal.com.cn

 | www.abclonal.com.cn

CD6 is a type I transmembrane glycoprotein and contains three extracellular SRCR domains. It is expressed on thymocytes, T cells, a subset of B cells, and on certain regions of the brain. Mouse CD6 is a 665 amino acid (aa) protein that includes a 16 aa signal sequence, a 382 aa extracellular domain, a 21 aa transmembrane segment, and a 246 aa cytoplasmic region. CD6 appears to play a role as both a co-stimulatory molecule in T cell activation and as an adhesion receptor. Studies demonstrating a mitogenic effect for T cells with some CD6-specific monoclonal antibodies, in conjunction with either accessory cells or PMA and anti-CD2 mAb, support the concept of CD6 as a co-stimulatory molecule. Other studies have demonstrated an adhesive role for CD6. It has been demonstrated to bind the activated leukocyte cell adhesion molecule (ALCAM, CD166).

Recombinant Mouse CD6 Protein is produced by HEK293 cells expression system. The target protein is expressed with sequence (Met1-Gly396) of mouse CD6 (Accession #Q91WN5) fused with His tag at the C-terminus.

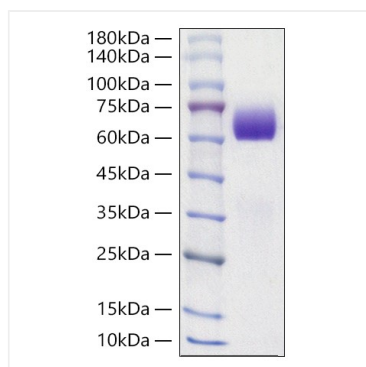
Measured by the ability of the immobilized protein to support the adhesion of Jurkat human acute T cell leukemia cells. When 8×10^4 cells/well are added to mCD6-His coated plates (5 $\mu\text{g/mL}$ and 100 $\mu\text{L/well}$) in the presence of 10 $\mu\text{g/mL}$ PHA, approximately >45% cells will adhere specifically after 60 minutes at 37°C.

The product is shipped at ambient temperature. Upon receipt, store it immediately at the temperature recommended below.

Store at -20°C. Store the lyophilized protein at -20°C to -80°C up to 1 year from the date of receipt.
After reconstitution, the protein solution is stable at -20°C for 3 months, at 2-8°C for up to 1 week.
Avoid repeated freeze/thaw cycles.

For your safety and health, please wear a lab coat and disposable gloves for handling.

Validation Data



Recombinant Mouse CD6 Protein was determined by SDS-PAGE under reducing conditions with Coomassie Blue.