

Catalog No.: RP03275 **Recombinant**

Species	Gene ID	Swiss Prot
Human	83729	P58166

N-hFC

INHBE;Inhibin beta E chain; Activin beta-E chain

Source	Purification
HEK293 cells	≥ 90 % as determined by SDS-PAGE.

39.39 kDa 40-50 kDa

< 0.1 EU/μg of the protein by LAL method.

Lyophilized from a 0.2 μ m filtered solution of PBS, pH 7.4.

Centrifuge the vial before opening. Reconstitute to a concentration of 0.1-0.5 mg/mL in sterile distilled water. Avoid vortex or vigorously pipetting the protein. For long term storage, it is recommended to add a carrier protein or stabilizer (e.g. 0.1% BSA, 5% HSA, 10% FBS or 5% Trehalose), and aliquot the reconstituted protein solution to minimize free-thaw cycles.

 | 400-999-6126

 | cn.market@abclonal.com.cn

 | www.abclonal.com.cn

The INHBE protein is an important molecular switch that coordinates the inhibin and activin systems to regulate pituitary follicle-stimulating hormone secretion. Its critical role extends to multiple physiological functions, including hormone secretion, cell development, insulin release, and bone growth.

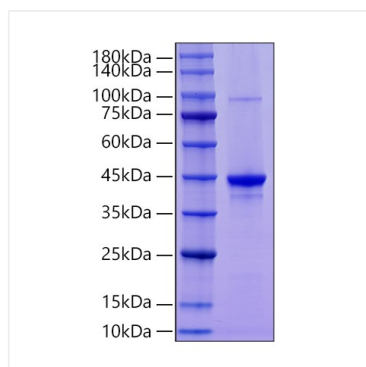
Recombinant Human Inhibin beta E/INHBE Protein is produced by HEK293 cells expression system. The target protein is expressed with sequence (Thr237-Ser350) of human Inhibin beta E/INHBE (Accession #NP_113667.1) fused with hFc tag at the N-terminus.

Store at -20°C. Store the lyophilized protein at -20°C to -80 °C up to 1 year from the date of receipt.

After reconstitution, the protein solution is stable at -20°C for 3 months, at 2-8°C for up to 1 week.

Avoid repeated freeze/thaw cycles.

Validation Data



Recombinant Human Inhibin beta E/INHBE
Protein was determined by SDS-PAGE under
reducing conditions with Coomassie Blue.