

Recombinant Human CXCL6 Protein

Catalog No.: RP03246 **Recombinant**

Sequence Information

Species	Gene ID	Swiss Prot
Human	6372	P80162

Tags

C-His

Synonyms

C-X-C Motif Chemokine 6; Chemokine Alpha 3; CKA-3; Granulocyte Chemotactic Protein 2; GCP-2; Small-Inducible Cytokine B6; CXCL6; GCP2; SCYB6

Product Information

Source	Purification
HEK293 cells	≥ 95 % as determined by SDS-PAGE.

Calculated MW	Observed MW
9.35 kDa	10-15 kDa

Endotoxin

< 1 EU/μg of the protein by LAL method.

Formulation

Lyophilized from a 0.22 μm filtered solution of 20 mM PB, 150 mM NaCl, 5% Trehalose, 1 mM EDTA, pH 7.4. Contact us for customized product form or formulation.

Reconstitution

Centrifuge the vial before opening. Reconstitute to a concentration of 0.1-0.5 mg/mL in sterile distilled water. Avoid vortex or vigorously pipetting the protein. For long term storage, it is recommended to add a carrier protein or stabilizer (e.g. 0.1% BSA, 5% HSA, 10% FBS or 5% Trehalose), and aliquot the reconstituted protein solution to minimize free-thaw cycles.

Contact

☎ | 400-999-6126

✉ | cn.market@abclonal.com.cn

Background

Chemokine (C-X-C-Motif) Ligand 6 (CXCL6) is a small cytokine belonging to the CXC chemokine family. It is a potent neutrophil chemotactic and activating factor and it exhibits extensive similarity to other CXC chemokines such as IL-8 and ENA-78. CXCL6 can promote the release of MMP-9 from granulocytes indicating its potential role as an inflammatory mediator. It functionally uses both of the IL-8/CXCL8 receptors to chemoattract neutrophils but that is structurally most related to epithelial cell-derived neutrophil attractant-78 (ENA-78)/CXCL5. The human CXCL6 gene has been cloned and is physically mapped to the CXC chemokine locus on chromosome 4. Mature human CXCL6 is a 75 amino acid (aa) protein with a predicted molecular weight of approximately 8 kDa. Human CXCL6 shares 60% and 67% aa identity with mouse and bovine CXCL6, respectively.

Basic Information

Description

Recombinant Human CXCL6 Protein is produced by Mammalian expression system. The target protein is expressed with sequence (Gly38-Asn114) of human CXCL6 (Accession #P80162) fused with His tag at the C-terminus.

Bio-Activity

Shipping

The product is shipped at ambient temperature. Upon receipt, store it immediately at the temperature recommended below.

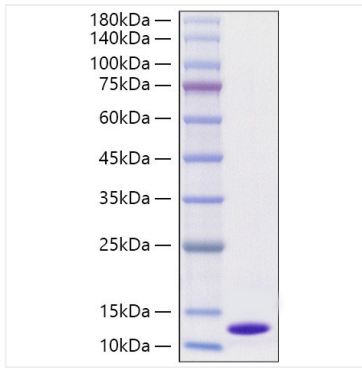
Storage

Store at -20°C. Store the lyophilized protein at -20°C to -80 °C up to 1 year from the date of receipt. After reconstitution, the protein solution is stable at -20°C for 3 months, at 2-8°C for up to 1 week. Avoid repeated freeze/thaw cycles.

Operational Notes

For your safety and health, please wear a lab coat and disposable gloves for handling.

Validation Data



Recombinant Human CXCL6 Protein was determined by SDS-PAGE under reducing conditions with Coomassie Blue.