

Recombinant Human APOL1 Protein

Catalog No.: RP03217 **Recombinant**

Sequence Information

Species	Gene ID	Swiss Prot
Human	8542	Q2KHQ6

Tags

C-His

Synonyms

APO-L; APOL; APOL-I; APOL1; FSGS4

Product Information

Source	Purification
Baculovirus-Insect Cells	> 80% by SDS-PAGE, > 90% by SEC-HPLC

Calculated MW	Observed MW
42.53 kDa	40-45 kDa

Endotoxin

< 1.0 EU/μg of the protein by LAL method.

Formulation

Lyophilized from a 0.22 μm filtered solution of 20 mM Tris, 300 mM NaCl, 10% Glycerol, 0.5 mM TCEP, pH 7.5. Contact us for customized product form or formulation.

Reconstitution

Centrifuge the vial before opening. Reconstitute to a concentration of 0.1-0.5 mg/mL in sterile distilled water. Avoid vortex or vigorously pipetting the protein. For long term storage, it is recommended to add a carrier protein or stabilizer (e.g. 0.1% BSA, 5% HSA, 10% FBS or 5% Trehalose), and aliquot the reconstituted protein solution to minimize free-thaw cycles.

Background

APOL1, also known as apolipoprotein L1, is a minor apoprotein component of HDL (High-density lipoprotein) or 'good cholesterol' which is synthesized in the liver and also in many other tissues, including pancreas, kidney, and brain. APOL1 belongs to the apolipoprotein L family. It may play a role in lipid exchange and transport throughout the body. It may also participate in reverse cholesterol transport from peripheral cells to the liver. Defects in APOL1 are the cause of focal segmental glomerulosclerosis type 4 (FSGS4). It is a renal pathology defined by the presence of segmental sclerosis in glomeruli and resulting in proteinuria, reduced glomerular filtration rate and edema. Renal insufficiency often progresses to end-stage renal disease, a highly morbid state requiring either dialysis therapy or kidney transplantation.

Basic Information

Description

Recombinant Human APOL1 Protein is produced by Baculovirus-Insect Cells expression system. The target protein is expressed with sequence (Met1-Leu398) of human APOL1 (Accession #Q2KHQ6) fused with His tag at the C-terminus.

Bio-Activity

Storage

Store at -20°C. Store the lyophilized protein at -20°C to -80 °C up to 1 year from the date of receipt.

After reconstitution, the protein solution is stable at -20°C for 3 months, at 2-8°C for up to 1 week.

Avoid repeated freeze/thaw cycles.

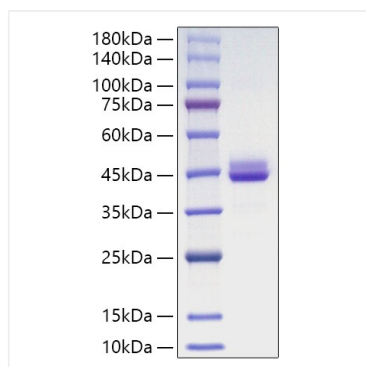
Contact

☎		400-999-6126
✉		cn.market@abclonal.com.cn



www.abclonal.com.cn

Validation Data



Recombinant Human APOL1 Protein was determined by SDS-PAGE under reducing conditions with Coomassie Blue.