

Active Recombinant Human PD-1/PDCD1/CD279 Protein

Catalog No.: RP03166 **Recombinant**

Sequence Information

Species	Gene ID	Swiss Prot
Human	5133	Q8IX89 (Q15116)

Tags

C-mFc

Synonyms

PDCD1; CD279; PD-1; PD1; SLEB2;
hPD-1; hPD-I; hSLE1; programmed cell
death
1;PD-1;CD279;PD1;SLEB2;hPD-1;hPD-
I;hSLE1;PD-1/CD279

Product Information

Source	Purification
HEK293 cells	> 95% by Tris-Bis PAGE;> 95% by SEC-HPLC

Endotoxin

< 1 EU/μg of the protein by LAL method.

Formulation

Lyophilized from a 0.22 μm filtered
solution of PBS, pH 7.4.

Reconstitution

Centrifuge the tube before opening.
Reconstitute to a concentration of
0.1-0.5 mg/mL in sterile distilled water.
Avoid vortex or vigorously pipetting the
protein. For long term storage, it is
recommended to add a carrier protein or
stabilizer (e.g. 0.1% BSA, 5% HSA, 10%
FBS or 5% Trehalose), and aliquot the
reconstituted protein solution to
minimize free-thaw cycles.

Background

Programmed Death-1 receptor (PD-1), also known as CD279, is type I transmembrane protein belonging to the CD28 family of immune regulatory receptors. PD1 is a inhibitory receptor on antigen activated T-cells that plays a critical role in induction and maintenance of immune tolerance to self. Delivers inhibitory signals upon binding to ligands CD274/PDCD1L1 and CD273/PDCD1LG2 (PubMed:21276005). Following T-cell receptor (TCR) engagement, PDCD1 associates with CD3-TCR in the immunological synapse and directly inhibits T-cell activation.

Basic Information

Description

Recombinant Human PD1 Protein is produced by Expi293 expression system. The target protein is expressed with sequence (Leu25-Gln167) of Human PD1 fused with mFc at the C-terminal.

Bio-Activity

1. Immobilized Human PD1 at 0.5 μg/mL (100 μL/Well). Dose response curve for Biotinylated Anti-PD1 Ab. with the EC₅₀ of 68 ng/mL determined by ELISA. 2. Immobilized Human PD-1, mFc Tag at 1 μg/mL (100 μL/well) on the plate. Dose response curve for Human PD-L1, hFc Tag with the EC₅₀ of 0.15 μg/mL determined by ELISA.

Storage

Store the lyophilized protein at -20°C to -80°C for long term.
After reconstitution, the protein solution is stable at -20°C for 3 months, at 2-8°C for up to 1 week.
Avoid repeated freeze/thaw cycles.

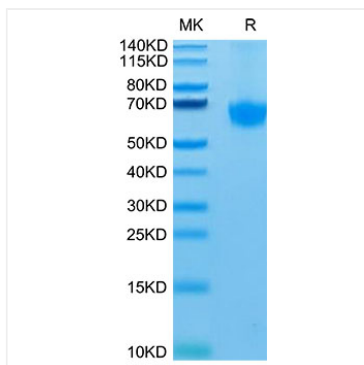
Contact

☎ | 400-999-6126

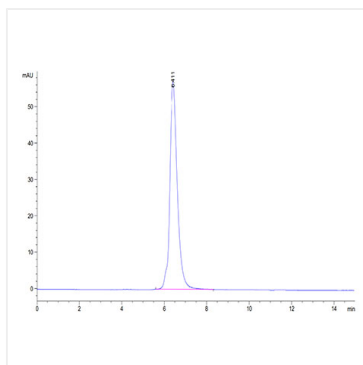
✉ | cn.market@abclonal.com.cn

🌐 | www.abclonal.com.cn

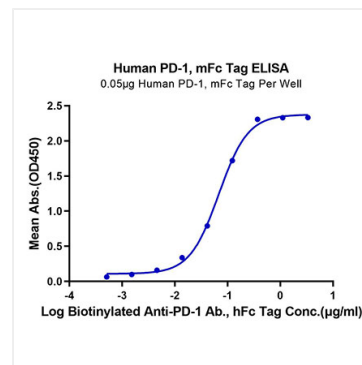
Validation Data



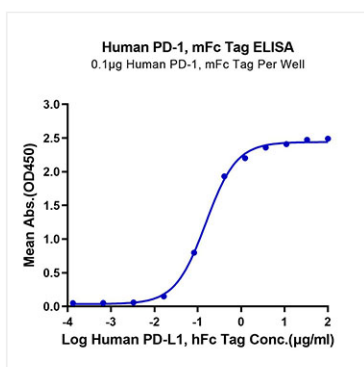
Active Recombinant Human PD-1/PDCD1/CD279 Protein was determined by SDS-PAGE with Coomassie Blue, showing a band at 64-68 kDa.



The purity of Active Recombinant Human PD-1/PDCD1/CD279 Protein is greater than 95% as determined by SEC-HPLC.



Immobilized Human PD-1, mFc Tag at 0.5μg/ml (100μl/Well). Dose response curve for Biotinylated Anti-PD-1 Ab., hFc Tag with the EC50 of 68ng/ml determined by ELISA.



Immobilized Human PD-1, mFc Tag at 1μg/ml (100μl/well) on the plate. Dose response curve for Human PD-L1, hFc Tag with the EC50 of 0.15μg/ml determined by ELISA.