

Recombinant Human Alkaline phosphatase (Placental type) /ALPP Protein

Catalog No.: RP03155 **Recombinant**

Sequence Information

Species	Gene ID	Swiss Prot
Human	250	P05187

Tags

C-6His

Synonyms

ALPP; PLAP; Alkaline phosphatase; placental type; EC:3.1.3.1; Alkaline phosphatase Regan isozyme; Placental alkaline phosphatase 1; PLAP-1

Product Information

Source

HEK293 cells

Purification

≥ 95 % as determined by SDS-PAGE; ≥ 95 % as determined by HPLC.

Calculated MW

53.8 kDa

Observed MW

60-68 kDa

Endotoxin

< 0.01 EU/μg of the protein by LAL method

Formulation

Lyophilized from a 0.22 μm filtered solution of 20mM Tris-HCl, 150mM NaCl, 0.2mM CaCl₂, pH 7.5.

Reconstitution

Centrifuge the vial before opening. Reconstitute to a concentration of 0.1-0.5 mg/mL in sterile distilled water. Avoid vortex or vigorously pipetting the protein. For long term storage, it is recommended to add a carrier protein or stabilizer (e.g. 0.1% BSA, 5% HSA, 10% FBS or 5% Trehalose), and aliquot the reconstituted protein solution to minimize free-thaw cycles.

Contact

☎ | 400-999-6126

✉ | cn.market@abclonal.com.cn

Background

Alkaline phosphatase can be considered "our favorite enzyme" for reasons apparent to those who diagnose and treat metabolic bone diseases or who study skeletal biology. Few might know, however, that alkaline phosphatase likely represents the most frequently assayed enzyme in all of medicine. Elevated activity in the circulation is universally recognized as a marker for skeletal or hepatobiliary disease.

Basic Information

Description

Recombinant Human Alkaline phosphatase (Placental type) /ALPP Protein is expressed from HEK293 with His tag at the C-Terminus. It contains Ile23-Asp506.

Bio-Activity

Immobilized Human Alkaline Phosphatase (Placental type) , His Tag at 0.5 μg/mL (100 μL/Well) on the plate. Dose response curve for Anti-Alkaline Phosphatase Antibody, hFc Tag with the EC₅₀ of 11.1 ng/mL determined by ELISA.

Shipping

The product is shipped at ambient temperature. Upon receipt, store it immediately at the temperature recommended below.

Storage

Store at -20°C. Store the lyophilized protein at -20°C to -80 °C up to 1 year from the date of receipt.

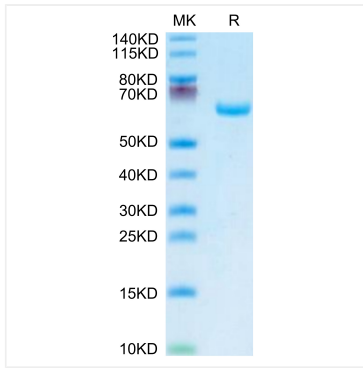
After reconstitution, the protein solution is stable at -20°C for 3 months, at 2-8°C for up to 1 week.

Avoid repeated freeze/thaw cycles.

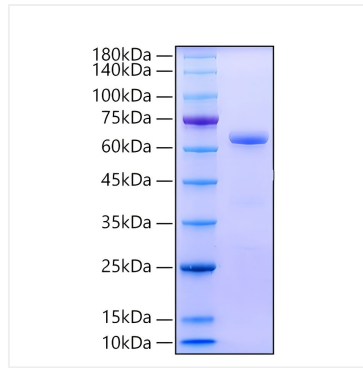
Operational Notes

For your safety and health, please wear a lab coat and disposable gloves for handling.

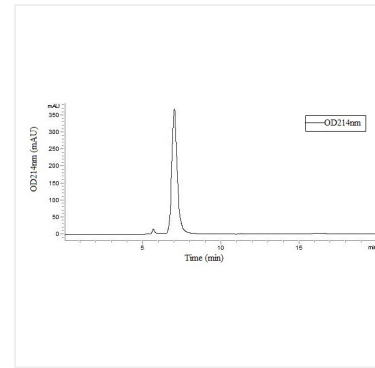
Validation Data



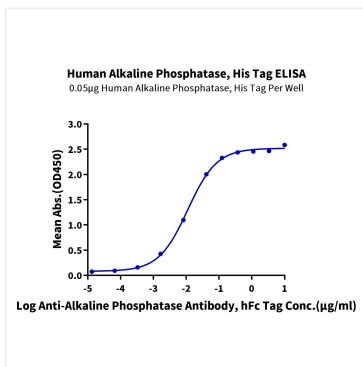
Recombinant Human Alkaline phosphatase (Placental type) /ALPP Protein was determined by Tris-Bis PAGE under reducing conditions.



Recombinant Human Alkaline phosphatase (Placental type) /ALPP Protein was determined by SDS-PAGE under reducing conditions with Coomassie Blue.



Recombinant Human Alkaline phosphatase (Placental type) /ALPP Protein is greater than 95% as determined by SEC-HPLC.



Immobilized Human Alkaline Phosphatase (Placental type), His Tag at 0.5 µg/mL (100 µL/Well) on the plate. Dose response curve for Anti-Alkaline Phosphatase Antibody, hFc Tag with the EC_{50} of 11.1 ng/mL determined by ELISA.