

# Recombinant Human Alkaline Phosphatase (Germ type) /ALPG Protein

Catalog No.: RP03154 **Recombinant**

## Sequence Information

Species	Gene ID	Swiss Prot
Human	251	P10696

### Tags

C-His

### Synonyms

Alkaline Phosphatase; ALP-1; Alkaline phosphatase; placental-like; GCAP; PLAP-like; ALPG; ALPPL; ALPPL2

## Product Information

Source	Purification
HEK293 cells	

Calculated MW	Observed MW
53.67 kDa	58-68 kDa

### Endotoxin

< 1 EU/μg

### Formulation

Lyophilized from a 0.22 μm filtered solution of 25mM Tris, 100mM NaCl, 1mM MgCl<sub>2</sub> pH 7.5.

### Reconstitution

Centrifuge the tube before opening. Reconstituting to a concentration more than 100 μg/ml is recommended. Dissolve the lyophilized protein in distilled water.

## Background

Alkaline phosphatase can be considered "our favorite enzyme" for reasons apparent to those who diagnose and treat metabolic bone diseases or who study skeletal biology. Few might know, however, that alkaline phosphatase likely represents the most frequently assayed enzyme in all of medicine. Elevated activity in the circulation is universally recognized as a marker for skeletal or hepatobiliary disease.

## Basic Information

### Description

Recombinant Human Alkaline Phosphatase (Germ type) /ALPG is produced by HEK293 cells expression system. The target protein is expressed with sequence (Ile20-Asp503) of human ALPG (Accession #NP\_112603) fused with a His tag at the C-terminus.

### Bio-Activity

Immobilized Human Alkaline Phosphatase (Germ type) , His Tag at 0.5μg/ml (100μl/well) on the plate. Dose response curve for Anti-Alkaline Phosphatase Antibody, hFc Tag with the EC<sub>50</sub> of 6.6ng/ml determined by ELISA.

### Storage

Store at -20°C. Store the lyophilized protein at -20°C to -80 °C up to 1 year from the date of receipt. After reconstitution, the protein solution is stable at -20°C for 3 months, at 2-8°C for up to 1 week. Avoid repeated freeze/thaw cycles.

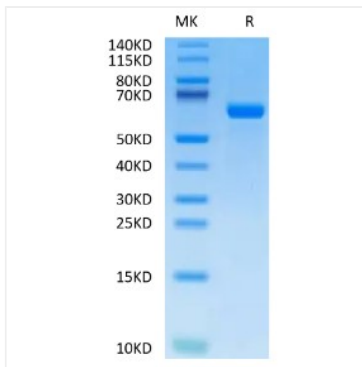
## Contact

 | 400-999-6126

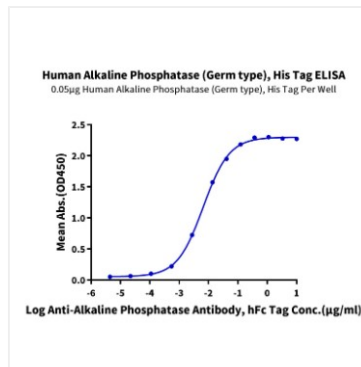
 | [cn.market@abclonal.com.cn](mailto:cn.market@abclonal.com.cn)

 | [www.abclonal.com.cn](http://www.abclonal.com.cn)

## Validation Data



Recombinant Human Alkaline Phosphatase (Germ type) /ALPG Protein was determined by SDS-PAGE with Coomassie Blue, showing a band at 50-70 kDa.



Immobilized Human Alkaline Phosphatase (Germ type) , His Tag at 0.5µg/ml (100µl/well) on the plate. Dose response curve for Anti-Alkaline Phosphatase Antibody, hFc Tag with the EC50 of 6.6ng/ml determined by ELISA.