

Recombinant Human ERAP2 Protein

Catalog No.: RP03147LQ **Recombinant**

Sequence Information

Species	Gene ID	Swiss Prot
Human	64167	Q6P179

Tags

N-His

Synonyms

Endoplasmic reticulum aminopeptidase 2; Leukocyte-derived arginine aminopeptidase; L-RAP; ERAP2; LRAP

Product Information

Source	Purification
HEK293 cells	> 95% by SDS-PAGE.

Endotoxin

< 1 EU/μg of the protein by LAL method.

Formulation

Supplied as a 0.22 μm filtered solution in 12.5mM Tris, 75mM NaCl, pH 7.5, 50% glycerol. Contact us for customized product form or formulation.

Reconstitution

Background

Leukocyte-derived arginine aminopeptidase (LRAP), also known as endoplasmic reticulum-aminopeptidase 2 (ERAP2), is the second identified aminopeptidase localized in the lumenal side of endoplasmic reticulum (ER) processing antigenic peptides presented to major histocompatibility complex (MHC) class I molecules. It is a 96-amino acid protein with significant homology to placental leucine aminopeptidase and adipocyte-derived leucine aminopeptidase. LRAP preferentially hydrolyzes the basic residues Arg and Lys, and contains the HEXXH(X)18E zinc-binding motif, which is the characteristic of the M1 family of zinc metallopeptidases which also includes PILS/ARTS1/ERAP1 and LNPEP/PLAP. Induced by interferon-gamma, LRAP is able to trim various MHC class I antigenic peptide precursors.

Basic Information

Description

Recombinant Human ERAP2 Protein is produced by HEK293 cells expression system. The target protein is expressed with sequence (Met1-Lys505) of Human ERAP2 (Accession #NP_071745.1) fused with His tag at the N-terminus.

Bio-Activity

Measured by its ability to cleave the fluorogenic peptide substrate, Arg-7-amido-4-methylcoumarin (Arg-AMC). The specific activity is >50 pmoles/min/μg.

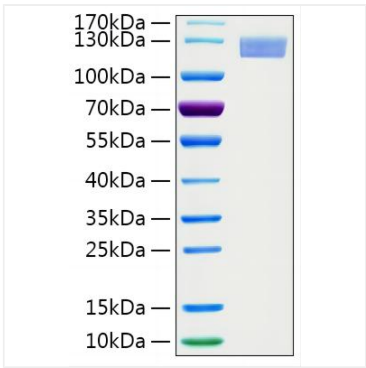
Storage

This product is stable at ≤ -70°C for up to 1 year from the date of receipt. For optimal storage, aliquot into smaller quantities after centrifugation and store at recommended temperature. Avoid repeated freeze/thaw cycles.

Contact

 | 400-999-6126 | cn.market@abclonal.com.cn | www.abclonal.com.cn

Validation Data



Recombinant Human ERAP2 Protein was determined by SDS-PAGE with Coomassie Blue, showing a band at 115-125 kDa.