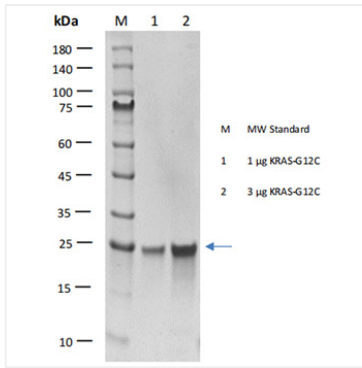
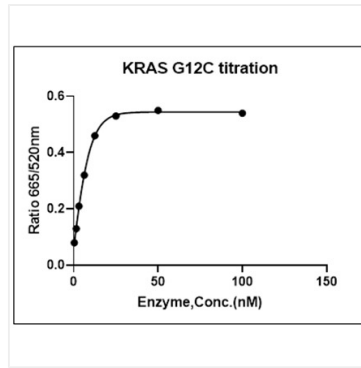




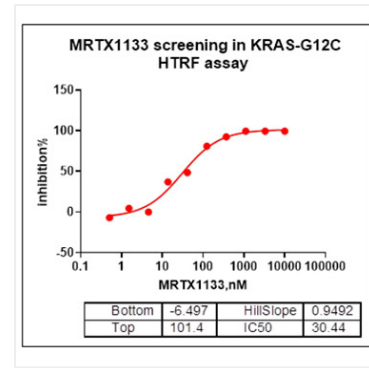
## Validation Data



Recombinant Human GTPase KRas/KRAS (G12C) Protein was determined by SDS-PAGE under reducing conditions with Coomassie Blue.



KRAS-G12C activity test using HTRF method. The KRAS-G12C activity was assayed with HTRF technology. The reaction was performed by incubating the KRAS-G12C protein, GTP, cRAF and beads at 25°C for 60 min, then reading Ratio 665/620nm signal with BMG.



KRAS-G12C activity test using HTRF method. The KRAS-G12C activity was assayed with HTRF technology. The reaction was performed by incubating the KRAS-G12C protein, GTP, cRAF and beads at 25°C for 60 min, then reading Ratio 665/620nm signal with BMG.