

Catalog No.: RP02964 **Recombinant**

Species	Gene ID	Swiss Prot
human	2621	O14393-2

C-His

Synonyms
GAS6; AXLLG; Growth arrest-specific protein 6; GAS-6; AXL receptor tyrosine kinase ligand

Source	Purification
HEK293 cells	≥ 90 % as determined by SDS-PAGE

Calculated MW	Observed MW
70.60 kDa	71-75 kDa


< 1 EU/μg of the protein by LAL method.

Lyophilized from a 0.22 μm filtered solution of PBS, pH 7.4.

Centrifuge the vial before opening. Reconstitute to a concentration of 0.1-0.5 mg/mL in sterile distilled water. Avoid vortex or vigorously pipetting the protein. For long term storage, it is recommended to add a carrier protein or stabilizer (e.g. 0.1% BSA, 5% HSA, 10% FBS or 5% Trehalose), and aliquot the reconstituted protein solution to minimize free-thaw cycles.

 | 400-999-6126

 | cn.market@abclonal.com.cn

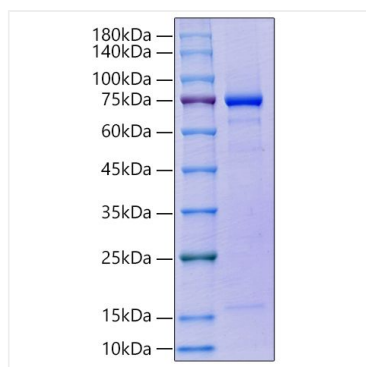
 | www.abclonal.com.cn

Gas6 is a multimodular protein that is up-regulated by a wide variety of cell types in response to growth arrest . Gas6 and the structurally related Protein S are vitamin K-dependent and have an extensively gamma -carboxylated N-terminal Gla domain, four EGF-like repeats, and a C-terminal region with homology to steroid hormone binding globulin (SHBG) . Gas6 binds and induces signaling through the receptor tyrosine kinases Axl, Dtk, and Mer . Human Gas6 interacts with both mouse and rat orthologs of these receptors . The full length isoform may be cleaved, resulting in release of the free SHBG region which can independently activate Axl . Shed soluble forms of Axl and Mer bind Gas6 and function as decoy receptors . Gas6 induces a variety of responses, including prevention of apoptosis , cell proliferation , platelet-mediated thrombosis , retinal epithelial cell phagocytosis of outer rod segments , inhibition of VEGF-induced endothelial cell chemotaxis , and the differentiation and expansion of NK cell precursors . The affinity of Gas6 for phosphatidylserine likely contributes to its role in promoting the phagocytosis of apoptotic cells . Several of these effects have been shown to require gamma -carboxylation of the Gla domain .

Recombinant Human GAS-6 Protein is produced by HEK293 cells expression system. The target protein is expressed with sequence (Met1-Ala678) of Human GAS-6(Accession #NP_000811) fused with a His tag at the C-terminus.

Store at -20°C. Store the lyophilized protein at -20°C to -80 °C up to 1 year from the date of receipt.
After reconstitution, the protein solution is stable at -20°C for 3 months, at 2-8°C for up to 1 week.
Avoid repeated freeze/thaw cycles.

Validation Data



Recombinant Human GAS-6 Protein was determined by SDS-PAGE under reducing conditions with Coomassie Blue.