

Recombinant Human CFHR2 Protein

Catalog No.: RP02802 **Recombinant**

Sequence Information

Species	Gene ID	Swiss Prot
Human	3080	P36980

Tags

C-His

Synonyms

Complement Factor H-Related Protein 2; FHR-2; DDESK59; H Factor-Like 3; H Factor-Like Protein 2; CFHR2; CFHL2; FHR2; HFL3

Product Information

Source	Purification
HEK293 cells	≥ 95 % as determined by SDS-PAGE.

Calculated MW	Observed MW
29.78 kDa	31, 35 kDa

Endotoxin

< 1 EU/μg of the protein by LAL method.

Formulation

Lyophilized from a 0.22 μm filtered solution of 20mM PB, 200mM NaCl, 2mM EDTA, pH 7.4.

Reconstitution

Centrifuge the tube before opening. Reconstitute to a concentration of 0.1-0.5 mg/mL in sterile distilled water. Avoid vortex or vigorously pipetting the protein. For long term storage, it is recommended to add a carrier protein or stabilizer (e.g. 0.1% BSA, 5% HSA, 10% FBS or 5% Trehalose), and aliquot the reconstituted protein solution to minimize free-thaw cycles.

Contact

☎ | 400-999-6126

✉ | cn.market@abclonal.com.cn

🌐 | www.abclonal.com.cn

Background

Complement Factor H-Related Protein 2 (CFHR2) is a secreted protein that belongs to the complement factor H protein family. Members of the H-related protein family are exclusively composed of individually folded protein domains, termed short consensus repeats (SCRs) or complement control modules. CFHR2 is synthesized as a 270 amino acid precursor that contains an 18 amino acid signal peptide and a 252 amino acid mature chain with 4 Sushi (CCP/SCR) domains. CFHR2 is synthesized in the liver and secreted into plasma. It may be involved in complement regulation. CFHR2 can also be associated with lipoproteins and may play a role in lipid metabolism.

Basic Information

Description

Recombinant Human CFHR2 Protein is produced by HEK293 cells expression system. The target protein is expressed with sequence (Glu19-Lys270) of human CFHR2 (Accession #NP_001299601.1) fused with a 6×His tag at the C-terminus.

Bio-Activity

Shipping

The product is shipped at ambient temperature. Upon receipt, store it immediately at the temperature recommended below.

Storage

Store at -20°C. Store the lyophilized protein at -20°C to -80 °C up to 1 year from the date of receipt.

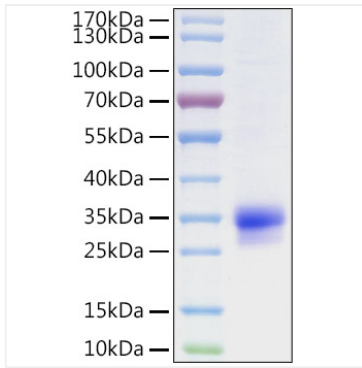
After reconstitution, the protein solution is stable at -20°C for 3 months, at 2-8°C for up to 1 week.

Avoid repeated freeze/thaw cycles.

Operational Notes

For your safety and health, please wear a lab coat and disposable gloves for handling.

Validation Data



Recombinant Human CFHR2 Protein was determined by SDS-PAGE under reducing conditions with Coomassie Blue.