

**Catalog No.: RP02791LQ** **Recombinant**

Species	Gene ID	Swiss Prot
Human	3939	P00338

## N-His

LDHM: GSD11: PIG19: HEL-S-133P: LDHA

<b>Source</b> <i>E. coli</i>	<b>Purification</b> ≥ 95 % as determined by SDS- PAGE.
---------------------------------	---

Calculated MW	Observed MW
37.53 kDa	40-45 kDa

< 1 EU/μg of the protein by LAL method.


Supplied as a 0.22  $\mu\text{m}$  filtered solution in 20mM Tris, 250mM NaCl, 10% Glycerol, pH8.0.

## Reconstitution

## Contact

 | 400-999-6126

✉ | [cn.market@abclonal.com.cn](mailto:cn.market@abclonal.com.cn)

 | [www.abclonal.com.cn](http://www.abclonal.com.cn)

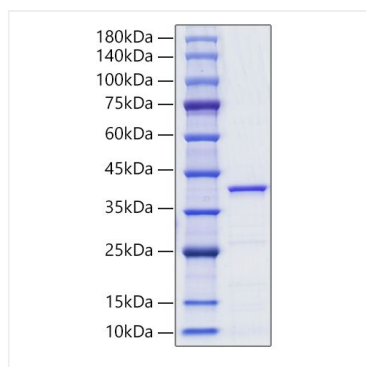
L-Lactate Dehydrogenase A Chain (LDHA) is an enzyme that catalyzes the conversion of L-lactate and NAD<sup>+</sup> to pyruvate and NADH in the final step of anaerobic glycolysis. LDHA contains an N-terminal coenzyme binding region, a central catalytic site, and at least nine utilized Lys acetylation and two Tyr phosphorylation sites. LDHA belongs to the lactate dehydrogenase family, expressed predominantly in muscle tissue. LDHA mutations have been linked to exertional myoglobinuria.

Recombinant Human Lactate Dehydrogenase A/LDHA Protein is produced by *E. coli* expression system. The target protein is expressed with sequence (Met1-Phe332) of human Lactate Dehydrogenase A/LDHA (Accession #NP\_005557.1) fused with a 6xHis tag at the N-terminus.

Store at -70°C. This product is stable at  $\leq -70^{\circ}\text{C}$  for up to 1 year from the date of receipt. For optimal storage, aliquot into smaller quantities after centrifugation and store at recommended temperature. Avoid repeated freeze-thaw cycles.

## Validation Data

---



Recombinant Human Lactate Dehydrogenase A/LDHA Protein was determined by SDS-PAGE under reducing conditions with Coomassie Blue.