

**Catalog No.: RP02737** **Recombinant**

Species	Gene ID	Swiss Prot
Human	2346	O04609-1

## N-hFc

GCP2; PSMA; PSMAFGCP; FGCP; Folate hydrolase 1; FOLHNAALADase I; GCPII; GCPIImGCP; NAALAD1; NAALADase I; NAALADase; FOLH1; GIG27; PSM; FOLH; mGCP

<b>Source</b>	<b>Purification</b>
HEK293 cells	≥ 90 % as determined by SDS-PAGE; ≥ 90 % as determined by HPLC.

105.48 kDa                      130-150 kDa

< 0.01 EU/μg of the protein by LAL method

Centrifuge the tube before opening. Reconstitute to a concentration of 0.1-0.5 mg/mL in sterile distilled water. Avoid vortex or vigorously pipetting the protein. For long term storage, it is recommended to add a carrier protein or stabilizer (e.g. 0.1% BSA, 5% HSA, 10% FBS or 5% Trehalose), and aliquot the reconstituted protein solution to minimize free-thaw cycles.

 | 400-999-6126

 | [cn.market@abclonal.com.cn](mailto:cn.market@abclonal.com.cn)

 | [www.abclonal.com.cn](http://www.abclonal.com.cn)

Prostate-specific membrane antigen (PSMA) is an enzyme that in humans is encoded by the FOLH1 (folate hydrolase 1) gene, also known as Glutamate carboxypeptidase II (GCPII). Human PSMA is highly expressed in the prostate, roughly a hundred times greater than in most other tissues. In some prostate cancers, PSMA is the second-most upregulated gene product, with an 8- to 12-fold increase over levels in noncancerous prostate cells.

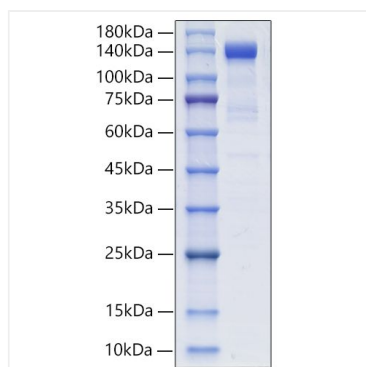
Recombinant Human PSMA/FOLH1 Protein is expressed from Expi293 with hFc tag at the N-terminal. It contains Lys44-Ala750.

Store at -20°C. Store the lyophilized protein at -20°C to -80 °C up to 1 year from the date of receipt.

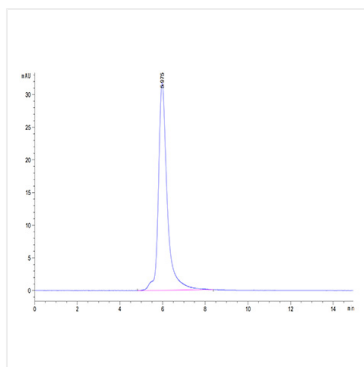
After reconstitution, the protein solution is stable at -20°C for 3 months, at 2-8°C for up to 1 week.

Avoid repeated freeze/thaw cycles.

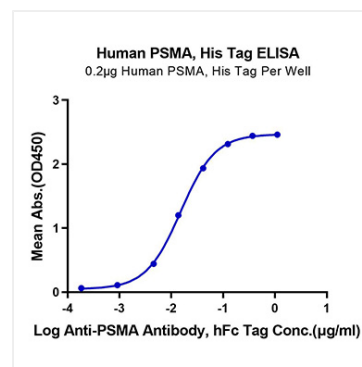
## Validation Data



Recombinant Human PSMA/FOLH1 Protein was determined by SDS-PAGE under reducing conditions with Coomassie Blue.



The purity of Human PSMA is greater than 90% as determined by SEC-HPLC.



Immobilized Human PSMA, His Tag at 2 μg/ml (100 μl/Well) on the plate. Dose response curve for Anti-PSMA Antibody, hFc Tag with the EC<sub>50</sub> of 15.2 ng/ml determined by ELISA.