

## Recombinant

## Background

MICL; CLL-1; CLEC12A; CLL1; DCAL2;  
DCAL-2; CD371; CD303; CLECSF11;  
CLECSF7; DLEC; HECL; PRO34150;  
DCAL-2

## Basic Information

Recombinant Cynomolgus CLEC12A/MICL/CLL-1 Protein is expressed from Expi293 with His tag at the N-terminal. It contains His65-Ala265.

## Bio-Activity

Calculated MW	Observed MW
24.6 kDa	38-50 kDa

< 1 EU/μg of the protein by LAL method.

## Shipping

The product is shipped at ambient temperature. Upon receipt, store it immediately at the temperature recommended below.

## Storage

Store at -20°C. Store the lyophilized protein at -20°C to -80 °C up to 1 year from the date of receipt.

After reconstitution, the protein solution is stable at -20°C for 3 months, at 2-8°C for up to 1 week.

Avoid repeated freeze/thaw cycles.

## Operational Notes

For your safety and health, please wear a lab coat and disposable gloves for handling.

## Reconstitution

Centrifuge the tube before opening. Reconstitute to a concentration of 0.1-0.5 mg/mL in sterile distilled water. Avoid vortex or vigorously pipetting the protein. For long term storage, it is recommended to add a carrier protein or stabilizer (e.g. 0.1% BSA, 5% HSA, 10% FBS or 5% Trehalose), and aliquot the reconstituted protein solution to minimize free-thaw cycles.

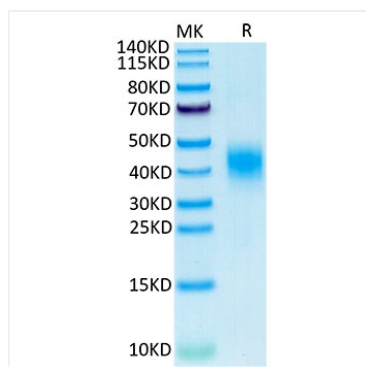
## Contact

 | 400-999-6126

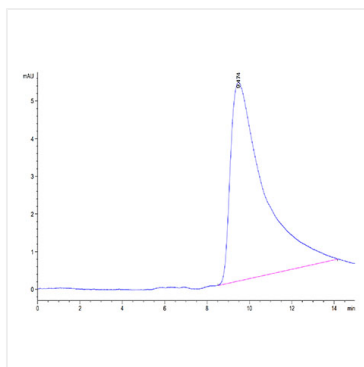
 | [cn.market@abclonal.com.cn](mailto:cn.market@abclonal.com.cn)

 | [www.abclonal.com.cn](http://www.abclonal.com.cn)

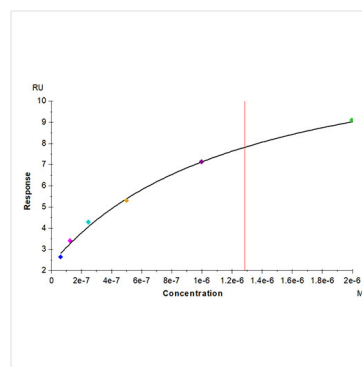
## Validation Data



Recombinant Cynomolgus CLEC12A/MICL/CLL-1 Protein was determined by Tris-Bis PAGE under reducing conditions.



The purity of Cynomolgus CLEC12A is greater than 95% as determined by SEC-HPLC.



Anti-CLEC12A Antibody captured on CM5 Chip via Protein A can bind Cynomolgus CLEC12A, His Tag with an affinity constant of 1.28  $\mu$ M as determined in SPR assay (Biacore T200).