

**Catalog No.:** RP02523      **Recombinant**      **4 Publications**

Species	Gene ID	Swiss Prot
Mouse	21803	P04202

## C-His

TGF-  
beta1;Tgfb;Tgfb-1;TGFBeta1;CED;DPD1;L  
AP;TGFB;TGFBeta;TGFB1

<b>Source</b> <i>E. coli</i>	<b>Purification</b> ≥ 95 % as determined by SDS- PAGE
---------------------------------	--

## 13.78 kDa 17 kDa

< 0.1 EU/μg of the protein by LAL method.

Lyophilized from a 0.22  $\mu\text{m}$  filtered solution of 20 mM sodium citrate, 0.2 M NaCl, pH 3.5.

Centrifuge the vial before opening. Reconstitute to a concentration of 0.1-0.5 mg/mL in sterile distilled water. Avoid vortex or vigorously pipetting the protein. For long term storage, it is recommended to add a carrier protein or stabilizer (e.g. 0.1% BSA, 5% HSA, 10% FBS or 5% Trehalose), and aliquot the reconstituted protein solution to minimize freeze-thaw cycles.

 | 400-999-6126

 | [cn.market@abclonal.com.cn](mailto:cn.market@abclonal.com.cn)

 | [www.abclonal.com.cn](http://www.abclonal.com.cn)

Transforming growth factor beta 1 or TGF- $\beta$ 1 is a polypeptide member of the transforming growth factor beta superfamily of cytokines. It is a secreted protein that performs many cellular functions, including the control of cell growth, cell proliferation, cell differentiation, and apoptosis. In humans, TGF- $\beta$ 1 is encoded by the TGFB1 gene.

Recombinant Mouse Mature TGF-beta 1 Protein is produced by *E. coli* expression system. The target protein is expressed with sequence of Mouse Mature TGF-beta 1 (Accession #) fused with polyhistidine tag at the C-terminus

Measured by its ability to inhibit the IL-4 dependent proliferation in HT-2 cells. The ED<sub>50</sub> for this effect is <0.1 ng/mL.

The product is shipped at ambient temperature. Upon receipt, store it immediately at the temperature recommended below.

Store at -20°C. Store the lyophilized protein at -20°C to -80 °C up to 1 year from the date of receipt.

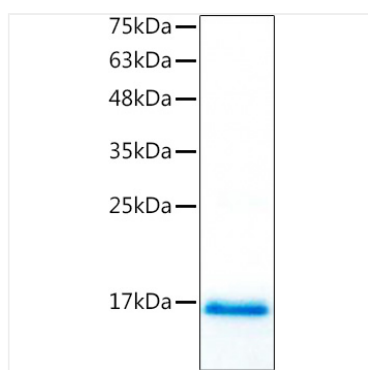
After reconstitution, the protein solution is stable at -20°C for 3 months, at 2-8°C for up to 1 week.

Avoid repeated freeze/thaw cycles.

For your safety and health, please wear a lab coat and disposable gloves for handling.

## Validation Data

---



Recombinant Mouse Mature TGF-beta 1  
Protein was determined by SDS-PAGE under  
reducing conditions with Coomassie Blue.