

# Biotinylated Recombinant Human Siglec-2/CD22 Protein

Catalog No.: RP02496 **Recombinant**

## Sequence Information

Species	Gene ID	Swiss Prot
Human	933	P20273

### Tags

C-His&Avi

### Synonyms

CD22; SIGLEC-2; SIGLEC2; CD22 molecule;SIGLEC-2;SIGLEC2

## Product Information

Source	Purification
HEK293 cells	> 95% by Tris-Bis PAGE;> 95% by SEC-HPLC

### Endotoxin

< 1 EU/μg of the protein by LAL method.

### Formulation

Lyophilized from a 0.22 μm filtered solution of PBS, pH 7.4.

### Reconstitution

Centrifuge the tube before opening.  
Reconstitute to a concentration of 0.1-0.5 mg/mL in sterile distilled water.  
Avoid vortex or vigorously pipetting the protein. For long term storage, it is recommended to add a carrier protein or stabilizer (e.g. 0.1% BSA, 5% HSA, 10% FBS or 5% Trehalose), and aliquot the reconstituted protein solution to minimize free-thaw cycles.

## Background

### Basic Information

#### Description

Biotinylated Recombinant Human Siglec-2/CD22 Protein is produced by Expi293 expression system. The target protein is expressed with sequence (Asp20-Arg687) of Human Siglec-2/CD22 fused with a His tag and Avi tag at the C-terminal.

#### Bio-Activity

Immobilized Biotinylated Human Siglec-2/CD22 at 0.5 μg/mL (100 μL/Well).Dose response curve for Anti Siglec-2 /CD22 Ab with the EC<sub>50</sub> of 15 ng/mL determined by ELISA.

#### Storage

Store the lyophilized protein at -20°C to -80°C for long term.  
After reconstitution, the protein solution is stable at -20°C for 3 months, at 2-8°C for up to 1 week.  
Avoid repeated freeze/thaw cycles.

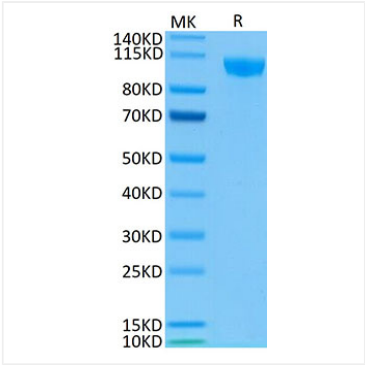
## Contact

☎ | 400-999-6126

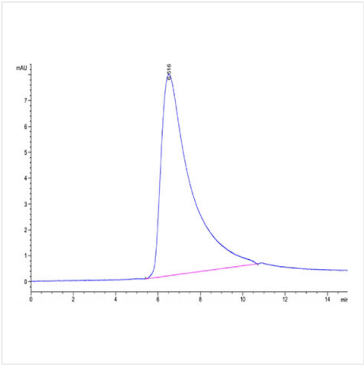
✉ | [cn.market@abclonal.com.cn](mailto:cn.market@abclonal.com.cn)

🌐 | [www.abclonal.com.cn](http://www.abclonal.com.cn)

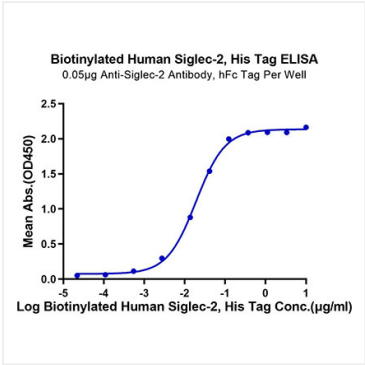
Validation Data



Biotinylated Human Siglec-2 on Tris-Bis PAGE under reduced condition. The purity is greater than 95%..



The purity of Biotinylated Human Siglec-2 is greater than 95% as determined by SEC-HPLC.



Immobilized Anti-Siglec-2 Antibody, hFc Tag at 0.5µg/ml (100µl/well) on the plate. Dose response curve for Biotinylated Human Siglec-2, His Tag with the EC<sub>50</sub> of 19.1ng/ml determined by ELISA.