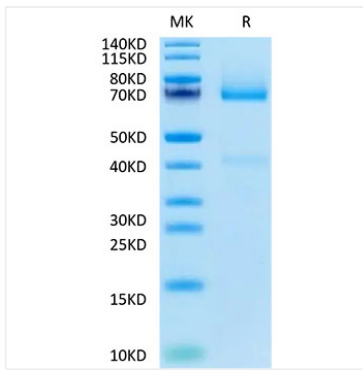
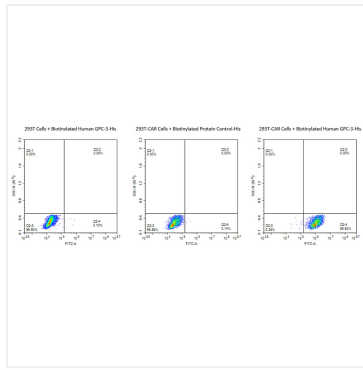




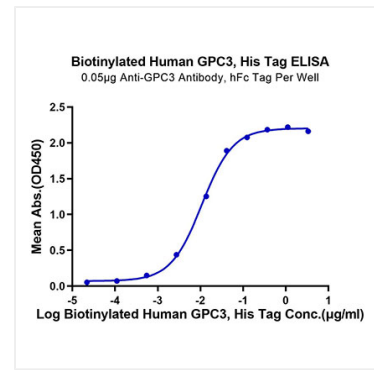
## Validation Data



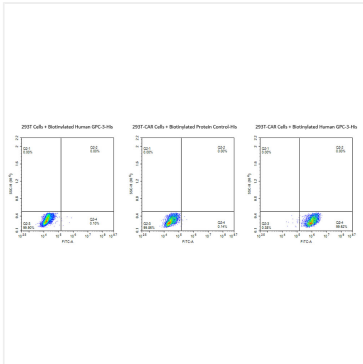
Biotinylated Recombinant Human Glypican-3/GPC3 Protein was determined by Tris-Bis PAGE under reducing conditions with Coomassie Blue.



Use Biotinylated Human GPC3-His protein to detect the expression rate of Anti-GPC3-CAR positive cells. 293T cells and anti-GPC3 CAR-293T cells were incubated with Biotinylated human GPC3-His (25-559) , His Tag and Biotinylated Protein Control-His. Non-transfected 293 cells and Biotinylated Protein Control-His were used as negative control. SA-FITC was used to evaluate the binding activity of Biotinylated Human GPC3.



Immobilized Anti-GPC3 Antibody, hFc Tag at 0.5µg/ml (100µl/well) on the plate. Dose response curve for Biotinylated Human GPC3, His Tag with the EC<sub>50</sub> of 10.8ng/ml determined by ELISA.



Use Biotinylated Human GPC3-His protein to detect the expression rate of Anti-GPC3-CAR positive cells. 293T cells and anti-GPC3 CAR-293T cells were incubated with Biotinylated human GPC3-His (25-559) , His Tag and Biotinylated Protein Control-His. Non-transfected 293 cells and Biotinylated Protein Control-His were used as negative control. SA-FITC was used to evaluate the binding activity of Biotinylated Human GPC3.