

Recombinant Human Integrin beta-6/ITGB6 Protein

Catalog No.: RP02194 **Recombinant**

Sequence Information

Species	Gene ID	Swiss Prot
Human	3694	P18564

Tags

C-His

Synonyms

ITGB6;AI1H

Product Information

Source	Purification
HEK293 cells	≥ 95 % as determined by SDS-PAGE; ≥ 95 % as determined by HPLC.

Calculated MW	Observed MW
75.14 kDa	80-115 kDa

Endotoxin

< 1 EU/μg of the protein by LAL method.

Formulation

Lyophilized from a 0.22 μm filtered solution of PBS, pH 7.4. Contact us for customized product form or formulation.

Reconstitution

Centrifuge the vial before opening. Reconstitute to a concentration of 0.1-0.5 mg/mL in sterile distilled water. Avoid vortex or vigorously pipetting the protein. For long term storage, it is recommended to add a carrier protein or stabilizer (e.g. 0.1% BSA, 5% HSA, 10% FBS or 5% Trehalose), and aliquot the reconstituted protein solution to minimize free-thaw cycles.

Contact

☎ | 400-999-6126

✉ | cn.market@abclonal.com.cn

Background

ITGB6 is known to be one of the major receptor components involved in host tropism of foot-and-mouth disease (FMD) virus in cattle. A competitive PCR technique called ARMS PCR was adapted to identify a single-nucleotide polymorphism (SNP), G29A, db SNP Id: rs109075046, in the 5' untranslated region (5'UTR) of the bovine ITGB6 gene.

Basic Information

Description

Recombinant Human Integrin beta-6/ITGB6 Protein is produced by HEK293 Cells expression system. The target protein is expressed with sequence (Gly22-Asn707) of human Integrin beta-6/ITGB6 (Accession #NP_000879.2) fused with 6×His tag at the C-terminus.

Bio-Activity

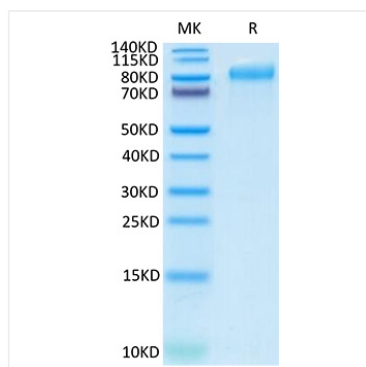
Storage

Store at -20°C. Store the lyophilized protein at -20°C to -80 °C up to 1 year from the date of receipt. After reconstitution, the protein solution is stable at -20°C for 3 months, at 2-8°C for up to 1 week. Avoid repeated freeze/thaw cycles.

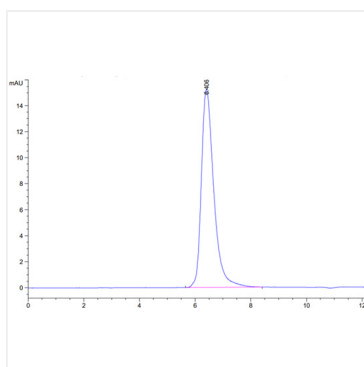


www.abclonal.com.cn

Validation Data



Recombinant Human Integrin beta-6/ITGB6 Protein was determined by SDS-PAGE under reducing conditions with Coomassie Blue.



The purity of Human Integrin beta-6/ITGB6 Protein (Cat.RP02194) was greater than 95% as determined by SEC-HPLC.