

Catalog No.: RP02117 **Recombinant**

Species	Gene ID	Swiss Prot
Mouse	74617	O920A5

C-His

Risc; AI957256; 2410018F01Rik;
4833411K15Rik

Source	Purification
HEK293 Cells	≥ 95 % as determined by SDS-PAGE.

Calculated MW	Observed MW
49.3 kDa	50-60 kDa

< 1 EU/μg of the protein by LAL method.

Lyophilized from a 0.22 μm filtered solution of PBS, pH 7.4.

Centrifuge the vial before opening. Reconstitute to a concentration of 0.1-0.5 mg/mL in sterile distilled water. Avoid vortex or vigorously pipetting the protein. For long term storage, it is recommended to add a carrier protein or stabilizer (e.g. 0.1% BSA, 5% HSA, 10% FBS or 5% Trehalose), and aliquot the reconstituted protein solution to minimize free-thaw cycles.

☎ | 400-999-6126

✉ | cn.market@abclonal.com.cn

🌐 | www.abclonal.com.cn

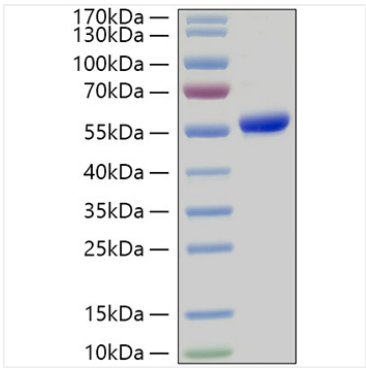
Recombinant Mouse SCPEP1/RISC Protein is produced by HEK293 Cells expression system. The target protein is expressed with sequence (Met1-Glu452) of Mouse SCPEP1/RISC (Accession #NP_083299.3) fused with 6xHis tag at the C-terminus.

The product is shipped at ambient temperature. Upon receipt, store it immediately at the temperature recommended below.

Store at -20°C. Store the lyophilized protein at -20°C to -80 °C up to 1 year from the date of receipt.
After reconstitution, the protein solution is stable at -20°C for 3 months, at 2-8°C for up to 1 week.
Avoid repeated freeze/thaw cycles.

For your safety and health, please wear a lab coat and disposable gloves for handling.

Validation Data



Recombinant Mouse SCPEP1/RISC Protein was determined by SDS-PAGE under reducing conditions with Coomassie Blue.