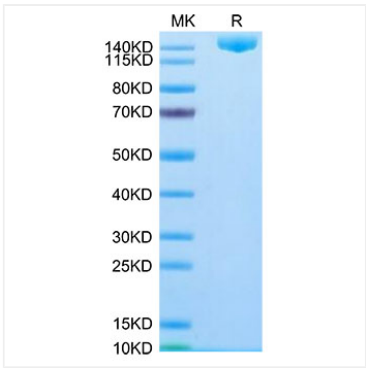


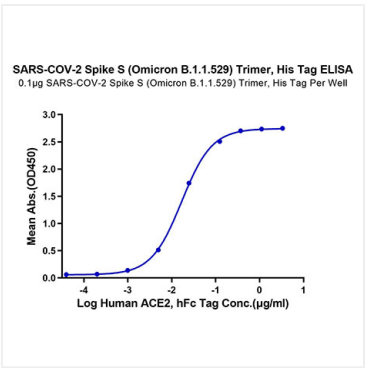
\* □□□□□□□□□□□□□□□□□□□□□□□□□□□□

Avoid repeated freeze/thaw cycles.

Validation Data



Recombinant SARS-CoV-2 Spike S1+S2 ECD(S-ECD)(B.1.1.529/Omicron) Trimer Protein was determined by Tris-Bis PAGE under reducing conditions.



Immobilized SARS-COV-2 Spike S (Omicron B.1.1.529) Trimer, His Tag at 1µg/ml (100µl/well) on the plate. Dose response curve for Human ACE2, hFc Tag with the EC<sub>50</sub> of 16.7ng/ml determined by ELISA.