

# Recombinant Cynomolgus CD3E&CD3D Protein

Catalog No.: RP02061 **Recombinant**

## Sequence Information

Species	Gene ID	Swiss Prot
Cynomolgus	102133065& 102133701	Q95LI5.2 & Q95LI8

**Tags**  
C-hFc

**Synonyms**  
CD3E&CD3D;CD3 epsilon&CD3 delta

## Product Information

Source	Purification
HEK293 cells	≥ 95 % as determined by SDS-PAGE; ≥95 % as determined by HPLC.

Calculated MW	Observed MW
36.9 kDa (CD3E), 35.4 kDa (CD3D)	58-62 kDa (CD3E), 44-46 kDa (CD3D)

**Endotoxin**  
< 0.1 EU/μg of the protein by LAL method.

**Formulation**  
Lyophilized from a 0.2 μm filtered solution of PBS, pH 7.4. Contact us for customized product form or formulation.

**Reconstitution**  
Centrifuge the tube before opening. Reconstitute to a concentration of 0.1-0.5 mg/mL in sterile distilled water. Avoid vortex or vigorously pipetting the protein. For long term storage, it is recommended to add a carrier protein or stabilizer (e.g. 0.1% BSA, 5% HSA, 10% FBS or 5% Trehalose), and aliquot the reconstituted protein solution to minimize free-thaw cycles.

## Contact

☎ | 400-999-6126

## Background

T-cell surface glycoprotein CD3 epsilon & CD3 delta chain, also known as CD3E & CD3D, are single-pass type I membrane proteins. When antigen presenting cells (APCs) activate T-cell receptor (TCR), TCR-mediated signals are transmitted across the cell membrane by the CD3 chains CD3D, CD3E, CD3G and CD3Z. All CD3 chains contain immunoreceptor tyrosine-based activation motifs (ITAMs) in their cytoplasmic domain.

## Basic Information

**Description**  
Recombinant Cynomolgus CD3E&CD3G Protein is produced by mammalian expression system. The target protein is expressed with sequence (Asp20-Arg687 (Q95LI52) & Phe22-Ala105 (Q95LI8)) of cynomolgus CD3E&CD3D (Accession #Q95LI5.2 & Q95LI8) fused with an Fc tag at the C-terminus.

## Bio-Activity

### Shipping

The product is shipped at ambient temperature. Upon receipt, store it immediately at the temperature recommended below.

### Storage

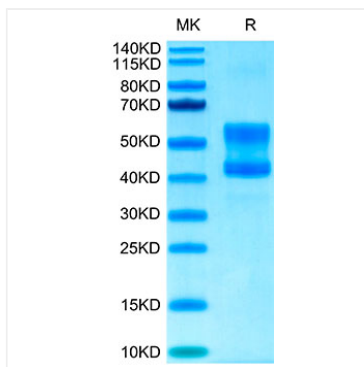
Store at -20°C. Store the lyophilized protein at -20°C to -80 °C up to 1 year from the date of receipt. After reconstitution, the protein solution is stable at -20°C for 3 months, at 2-8°C for up to 1 week. Avoid repeated freeze/thaw cycles.

### Operational Notes

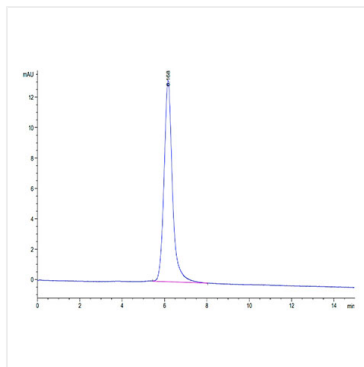
For your safety and health, please wear a lab coat and disposable gloves for handling.



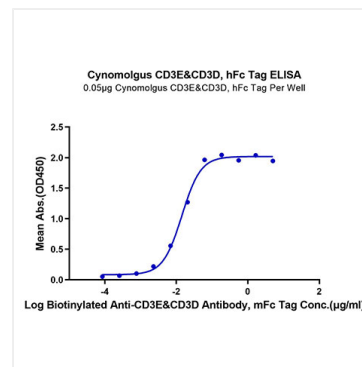
## Validation Data



Recombinant Cynomolgus CD3E&CD3D Protein was determined by Tris-Bis PAGE under reducing conditions.



The purity of Cynomolgus CD3E&CD3D was greater than 95% as determined by SEC-HPLC.



Immobilized Cynomolgus CD3E&CD3D, hFc Tag at 0.5µg/ml (100µl/Well). Dose response curve for Biotinylated Anti-CD3E&CD3D Antibody, mFc Tag with EC<sub>50</sub> of 13.9ng/ml determined by ELISA.