

Recombinant Cynomolgus PD-1/PDCD1/CD279 Protein

Catalog No.: RP02042

Recombinant

Sequence Information

Species	Gene ID	Swiss Prot
Cynomolgus		B0LAJ3

Tags

C-hFc

Synonyms

CD279;hPD-1;hPD-1;hSLE1;PD-1;PD1;SLEB2

Product Information

Source	Purification
HEK293 cells	> 95% by SDS-PAGE.

Endotoxin

< 0.1 EU/μg of the protein by LAL method.

Formulation

Lyophilized from a 0.2 μm filtered solution of PBS, pH 7.4. Contact us for customized product form or formulation.

Reconstitution

Centrifuge the tube before opening. Reconstitute to a concentration of 0.1-0.5 mg/mL in sterile distilled water. Avoid vortex or vigorously pipetting the protein. For long term storage, it is recommended to add a carrier protein or stabilizer (e.g. 0.1% BSA, 5% HSA, 10% FBS or 5% Trehalose), and aliquot the reconstituted protein solution to minimize freeze-thaw cycles.

Background

Programmed cell death protein 1, also known as PD-1 and CD279, is a protein found on the surface of cells that has a role in regulating the immune system's response to the cells of the human body by down-regulating the immune system and promoting self tolerance by suppressing T cell inflammatory activity.

Basic Information

Description

Recombinant Human DLL3 Protein is produced by HEK293 expression system. The target protein is expressed with sequence (Pro21-Gln167) of cynomolgus PD-1 (Accession #B0LAJ3) fused with an Fc tag at the C-terminus.

Bio-Activity

Storage

Store the lyophilized protein at -20°C to -80 °C for long term.

After reconstitution, the protein solution is stable at -20 °C for 3 months, at 2-8 °C for up to 1 week.

Avoid repeated freeze/thaw cycles.

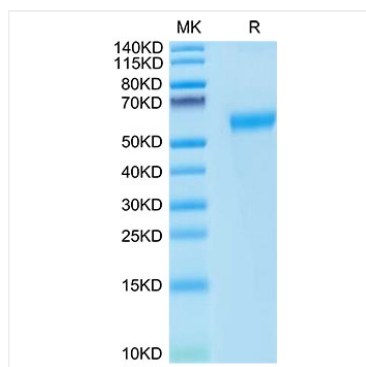
Contact

☎ | 400-999-6126

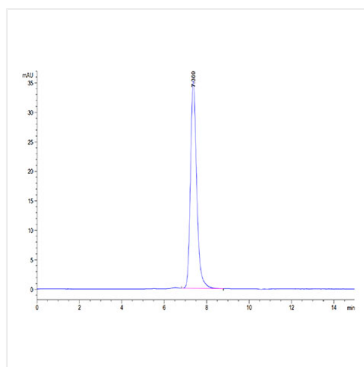
✉ | cn.market@abclonal.com.cn

🌐 | www.abclonal.com.cn

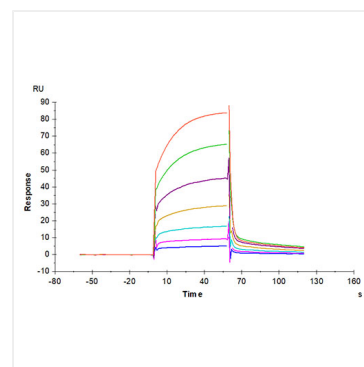
Validation Data



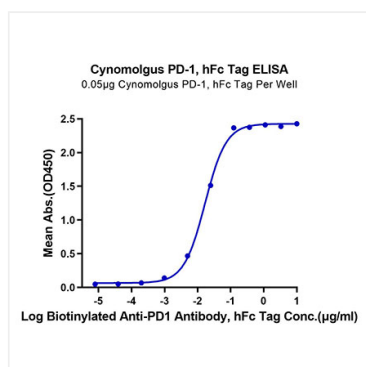
Cynomolgus PD-1 on Tris-Bis PAGE under reduced conditions. The purity is greater than 95%.



The purity of Cynomolgus PD-1 is greater than 95% as determined by SEC-HPLC.



Cynomolgus PD-1, hFc Tag captured on CM5 Chip via Protein A can bind Cynomolgus PD-L1, His Tag with an affinity constant of 1.28 μ M as determined in SPR assay (Biacore T200).



Immobilized Cynomolgus PD-1, hFc Tag at 0.5 μ g/ml (100 μ l/well) on the plate. Dose response curve for Biotinylated Anti-PD1 Antibody, hFc Tag with the EC_{50} of 16.8ng/ml determined by ELISA.