

Recombinant Human Siglec-2/CD22 Protein

Catalog No.: RP02003LQ **Recombinant**

Sequence Information

Species	Gene ID	Swiss Prot
Human	933	P20273

Tags
C-6×His

Synonyms
SIGLEC-2; SIGLEC2

Product Information

Source	Purification
Mammalian	> 95% by SDS-PAGE.

Endotoxin
< 0.1 EU/μg of the protein by LAL method.

Formulation
Supplied as 0.22μm filtered solution in PBS, pH 7.4. Contact us for customized product form or formulation.

Reconstitution

Background

CD22, or cluster of differentiation-22, is a molecule belonging to the SIGLEC family of lectins. It is found on the surface of mature B cells and to a lesser extent on some immature B cells. CD22 is a member of the immunoglobulin superfamily. CD22 functions as an inhibitory receptor for B cell receptor (BCR) signaling. It is also involved in the B cell trafficking to Peyer's patches in mice.

Basic Information

Description

Recombinant Mouse PD-L1/B7-H1 Protein is produced by mammalian expression system. The target protein is expressed with sequence (Asp20-Arg687) of human Siglec-2/CD22 (Accession #P20273) fused with a 6xHis tag at the C-terminus.

Bio-Activity

Immobilized Human Siglec-2/CD22 at 0.5μg/mL (100μL/well), dose response curve for Anti Siglec-2 /CD22 Ab with the EC₅₀ of 25ng/mL determined by ELISA.

Storage

This product is stable at ≤ -70° C for up to 1 year from the date of receipt. For optimal storage, aliquot into smaller quantities after centrifugation and store at recommended temperature. Avoid repeated freeze/thaw cycles.

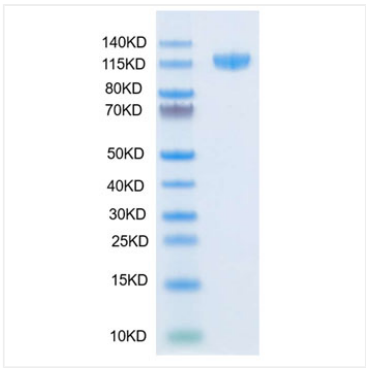
Contact

☎ | 400-999-6126

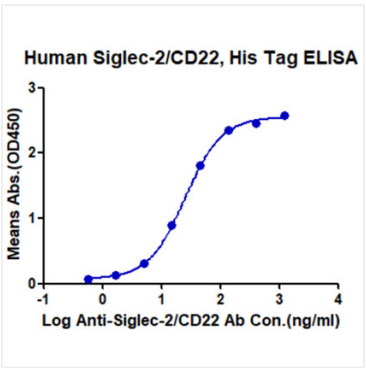
✉ | cn.market@abclonal.com.cn

🌐 | www.abclonal.com.cn

Validation Data



Recombinant Human Siglec-2/CD22 Protein was determined by SDS-PAGE with Coomassie Blue, showing a band at 100-120 kDa.



Immobilized Human Siglec-2/CD22 at 0.5ug/mL (100μL/well), dose response curve for Anti Siglec-2 /CD22 Ab with the EC₅₀ of 25ng/mL determined by ELISA.