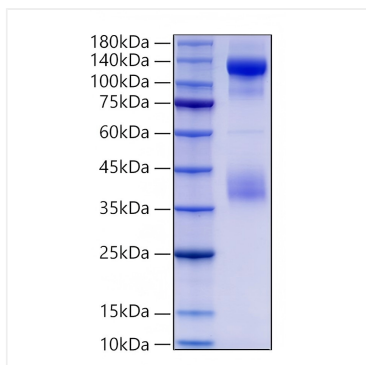
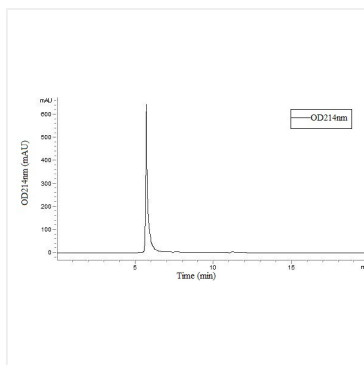


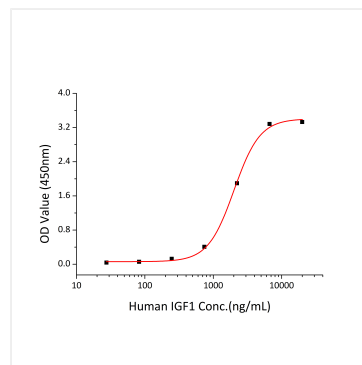
Validation Data



Recombinant Human Insulin Receptor/INSR/CD220 Protein was determined by SDS-PAGE under reducing conditions with Coomassie Blue.



Recombinant Human Insulin Receptor/INSR/CD220 Protein is greater than 95% as determined by SEC-HPLC.



Measured by its binding ability in a functional ELISA. Immobilized Human INSR at 10 $\mu\text{g/mL}$ (100 $\mu\text{L/well}$) can bind Human IGF1 (Catalog #RP00996) with a linear range of 0.25-2.01 $\mu\text{g/mL}$.