

Recombinant Human CCL14/HCC-1/HCC-3(28-93) Protein

Catalog No.: RP01985 **Recombinant**

Sequence Information

Species	Gene ID	Swiss Prot
Human	6358(9-74)	Q16627

Tags

C-6His

Synonyms

CCL14; NCC2; SCYA14; C-C motif chemokine 14; Chemokine CC-1/CC-3; HCC-1/HCC-3; HCC-1(1-74); NCC-2; Small-inducible cytokine A14; Cleaved into: HCC-1(3-74); HCC-1(4-74); HCC-1(9-74)

Product Information

Source	Purification
HEK293 cells	≥ 95 % as determined by SDS-PAGE.

Calculated MW	Observed MW
8.623 kDa	10-15 kDa

Endotoxin

< 0.1 EU/μg of the protein by LAL method.

Formulation

Lyophilized from a 0.2 μm filtered solution of PBS, pH 7.4.

Reconstitution

Centrifuge the vial before opening. Reconstitute to a concentration of 0.1-0.5 mg/mL in sterile distilled water. Avoid vortex or vigorously pipetting the protein. For long term storage, it is recommended to add a carrier protein or stabilizer (e.g. 0.1% BSA, 5% HSA, 10% FBS or 5% Trehalose), and aliquot the reconstituted protein solution to minimize freeze-thaw cycles.

Contact

☎ | 400-999-6126

✉ | cn.market@abclonal.com.cn

Background

Chemokine (C-C motif) Ligand 14 (CCL14) is a small cytokine belonging to the CC chemokine family. It is produced as a protein precursor that is processed to generate a mature active protein containing 74 amino acids that is 46% identical in amino acid composition to CCL3 and CCL4. This chemokine is expressed in various tissues including spleen, bone marrow, liver, muscle, and gut. CCL14 activates monocytes, but does not induce their chemotaxis. Human CCL14 is located on chromosome 17 within a cluster of other chemokines belonging to the CC family.

Basic Information

Description

Recombinant Human CCL14/HCC-1/HCC-3(28-93) Protein is produced by HEK293 cells expression system. The target protein is expressed with sequence (Gly28-Asn93) of Human CCL14/HCC-1/HCC-3(28-93) (Accession #NP_116739.1) fused with His at the C-terminus.

Bio-Activity

Shipping

The product is shipped at ambient temperature. Upon receipt, store it immediately at the temperature recommended below.

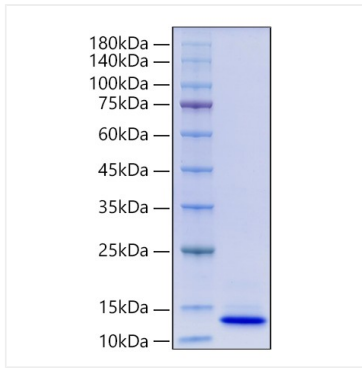
Storage

Store at -20°C. Store the lyophilized protein at -20°C to -80°C up to 1 year from the date of receipt. After reconstitution, the protein solution is stable at -20°C for 3 months, at 2-8°C for up to 1 week. Avoid repeated freeze/thaw cycles.

Operational Notes

For your safety and health, please wear a lab coat and disposable gloves for handling.

Validation Data



Recombinant Human
CCL14/HCC-1/HCC-3(28-93)Protein was
determined by SDS-PAGE under reducing
conditions with Coomassie Blue.