

Catalog No.: RP01981 **Recombinant**

Species	Gene ID	Swiss Prot
Human	6772	P42224-2

NO-Tag

STAT1;Signal transducer and activator of transcription 1-alpha/beta; Transcription factor ISGF-3 components p91/p84

Source	Purification
<i>E. coli</i>	≥ 90 % as determined by SDS-PAGE

Calculated MW	Observed MW
83.04 KDa	75-100 kDa

< 1 EU/μg of the protein by LAL method.

Lyophilized from a 0.2 μ m filtered solution of PBS, 2mM DTT 1mM EDTA pH 7.4.

Centrifuge the vial before opening. Reconstitute to a concentration of 0.1-0.5 mg/mL in sterile distilled water. Avoid vortex or vigorously pipetting the protein. For long term storage, it is recommended to add a carrier protein or stabilizer (e.g. 0.1% BSA, 5% HSA, 10% FBS or 5% Trehalose), and aliquot the reconstituted protein solution to minimize free-thaw cycles.

 | 400-999-6126

 | cn.market@abclonal.com.cn

 | www.abclonal.com.cn

Signal transducer and transcription activator that mediates cellular responses to interferons (IFNs), cytokine KITLG/SCF and other cytokines and other growth factors. STAT1 is a member of the STAT protein family. In response to cytokines and growth factors, STAT family members are phosphorylated by the receptor-associated kinases, and then form homo- or heterodimers that translocate to the cell nucleus where they act as transcription activators. STAT1 can be activated by various ligands, including interferon-alpha, interferon-gamma, EGF, PDGF and IL6. It is a signal transducer and transcription activator that mediates cellular responses to interferons (IFNs), cytokine KITLG/SCF and other cytokines and growth factors.

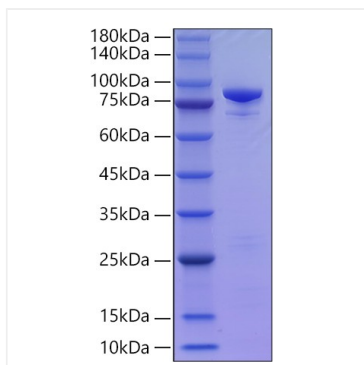
Recombinant Human STAT1 Protein is produced by *E. coli* expression system. The target protein is expressed with sequence (Met1-Val712) of Human STAT1 (Accession #NP_644671.1) fused with no tag.

Store at -20°C. Store the lyophilized protein at -20°C to -80 °C up to 1 year from the date of receipt.

After reconstitution, the protein solution is stable at -20°C for 3 months, at 2-8°C for up to 1 week.

Avoid repeated freeze/thaw cycles.

Validation Data



Recombinant Human STAT1 Protein was determined by SDS-PAGE under reducing conditions with Coomassie Blue.