

Recombinant Human CCL15/MIP-5/HCC-2 Protein

Catalog No.: RP01966 **Recombinant**

Sequence Information

Species	Gene ID	Swiss Prot
Human	6359	Q16663

Tags

C-6His

Synonyms

CCL15; MIP5; NCC3; SCYA15; C-C motif chemokine 15; Chemokine CC-2; HCC-2; Leukotactin-1; LKN-1; MIP-1 delta; Macrophage inflammatory protein 5; MIP-5; Mrp-2b; NCC-3; Small-inducible cytokine A15; Cleaved into: CCL15(22-92); CCL15(25-92); CCL15(29-92)

Product Information

Source	Purification
HEK293 cells	≥ 95 % as determined by SDS-PAGE.

Calculated MW	Observed MW
8.2 kDa	10-15 kDa

Endotoxin

< 0.01 EU/μg of the protein by LAL method

Formulation

Lyophilized from a 0.2 μm filtered solution of PBS, pH 7.4.

Reconstitution

Centrifuge the vial before opening. Reconstitute to a concentration of 0.1-0.5 mg/mL in sterile distilled water. Avoid vortex or vigorously pipetting the protein. For long term storage, it is recommended to add a carrier protein or stabilizer (e.g. 0.1% BSA, 5% HSA, 10% FBS or 5% Trehalose), and aliquot the reconstituted protein solution to minimize free-thaw cycles.

Contact

 | 400-999-6126

Background

Chemokine ligand 15 (CCL15), also known as leukotactin-1, MIP5, MIP1 and HCC-2, is a small cytokine belonging to the C-C chemokine family. CCL15 is prevalently expressed in liver, small intestine, colon, and in certain leukocytes and macrophages of the lung. It is chemotactic for neutrophils, monocytes, and lymphocytes and elicits its effects by binding to cell surface chemokine receptors like CCR1 and CCR3.

Basic Information

Description

Recombinant Human CCL15/MIP-5/HCC-2 Protein is produced by HEK293 cells expression system. The target protein is expressed with sequence (Ser46-Ile113) of Human CCL15/MIP-5/HCC-2 (Accession #NP_116741.2) fused with His at the C-terminus.

Bio-Activity

Shipping

The product is shipped at ambient temperature. Upon receipt, store it immediately at the temperature recommended below.

Storage

Store at -20°C. Store the lyophilized protein at -20°C to -80 °C up to 1 year from the date of receipt.

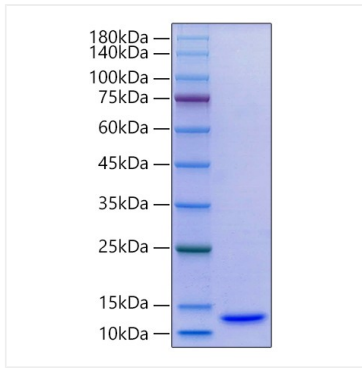
After reconstitution, the protein solution is stable at -20°C for 3 months, at 2-8°C for up to 1 week.

Avoid repeated freeze/thaw cycles.

Operational Notes

For your safety and health, please wear a lab coat and disposable gloves for handling.

Validation Data



Recombinant Human CCL15/MIP-5/HCC-2 Protein was determined by SDS-PAGE under reducing conditions with Coomassie Blue.