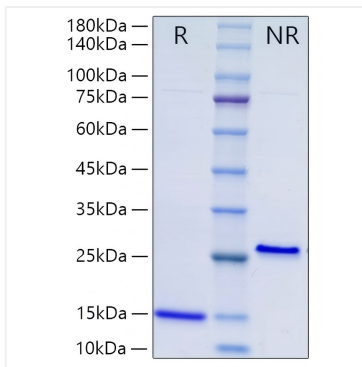
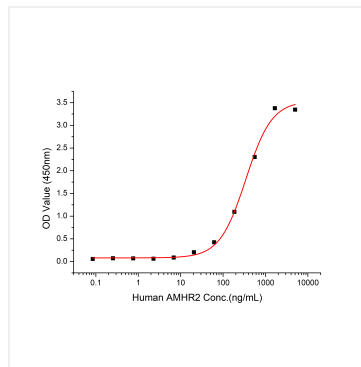


Validation Data



Recombinant Human Mature MIS/AMH Protein was determined by SDS-PAGE under reducing (R) and non-reducing (NR) conditions.



Measured by its binding ability in a functional ELISA. Immobilized Human AMH/MIS at 3 $\mu\text{g/mL}$ (100 μL /well) can bind Human AMHR2 with a linear range of 0.17-0.68 $\mu\text{g/mL}$.