

Recombinant Mouse CCL21/6Ckine Protein

Catalog No.: RP01885 **Recombinant**

Sequence Information

Species	Gene ID	Swiss Prot
Mouse	18829	P84444

Tags

C-His

Synonyms

C-C Motif Chemokine 21a; 6Ckine; Beta-Chemokine Exodus-2; Small-Inducible Cytokine A21a; Thymus-Derived Chemotactic Agent 4; TCA4; Ccl21a; Scya21; Scya21a

Product Information

Source	Purification
<i>Pichia</i>	≥ 90 % as determined by SDS-PAGE.

Calculated MW	Observed MW
12.89 kDa	15-25 kDa

Endotoxin

< 0.1 EU/μg of the protein by LAL method.

Formulation

Lyophilized from a 0.2 μm filtered solution of PBS, pH 7.4. Contact us for customized product form or formulation.

Reconstitution

Centrifuge the vial before opening. Reconstitute to a concentration of 0.1-0.5 mg/mL in sterile distilled water. Avoid vortex or vigorously pipetting the protein. For long term storage, it is recommended to add a carrier protein or stabilizer (e.g. 0.1% BSA, 5% HSA, 10% FBS or 5% Trehalose), and aliquot the reconstituted protein solution to minimize freeze-thaw cycles.

Contact

☎ | 400-999-6126

✉ | cn.market@abclonal.com.cn

Background

C-C Motif Chemokine 21a (CCL21a) is a small secreted cytokine that belongs to the intercrine beta (CCchemokine) family. Mouse CCL21 cDNA encodes a 133 amino acid residue protein with a 23 residue signalpeptide that is cleaved to generate the 110 residue mature protein. Mouse CCL21 has three forms while CCL21a has Ser-65. CCL21 elicits its effects by binding to a cell surface chemokine receptor known as CCR7 and CXCR3. Mouse CCL21 inhibits hemopoiesis and stimulates chemotaxis. It has chemotactic function in vitro for thymocytes and activated T-cells, but not for B-cells, macrophages, or neutrophils. Mouse CCL21 shows preferential activity towards naive T-cells and may play a role in mediating homing of lymphocytes to secondary lymphoid organs.

Basic Information

Description

Recombinant Mouse CCL21A Protein is produced by *Pichia* expression system. The target protein is expressed with sequence (Ser24-Gly133) of Mouse CCL21A (Accession #P84444) fused with a His tag at the C-terminus.

Bio-Activity

Shipping

The product is shipped at ambient temperature. Upon receipt, store it immediately at the temperature recommended below.

Storage

Store at -20°C. Store the lyophilized protein at -20°C to -80 °C up to 1 year from the date of receipt.

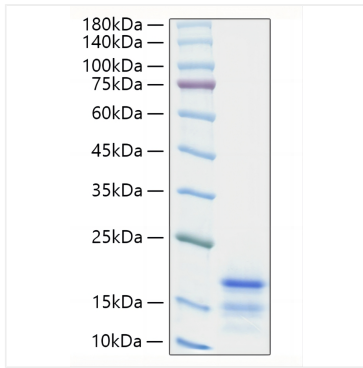
After reconstitution, the protein solution is stable at -20°C for 3 months, at 2-8°C for up to 1 week.

Avoid repeated freeze/thaw cycles.

Operational Notes

For your safety and health, please wear a lab coat and disposable gloves for handling.

Validation Data



Recombinant Mouse CCL21/6Ckine Protein was determined by SDS-PAGE under reducing conditions with Coomassie Blue.