

Catalog No.: RP01878 **Recombinant**

Species	Gene ID	Swiss Prot
Human	3481	P01344-1

C-hFc

IGF2:C11orf43:GRDF:IGF-II:PP9974

Source	Purification
HEK293 cells	≥ 85% as determined by SDS-PAGE.

33.44 kDa 40-45 kDa

< 0.1 EU/μg of the protein by LAL method.

Lyophilized from a 0.2 μ m filtered solution of 50mM Tris pH 7.5, 100mM Glycine pH 7.5.

Centrifuge the tube before opening. Reconstitute to a concentration of 0.1-0.5 mg/mL in sterile distilled water. Avoid vortex or vigorously pipetting the protein. For long term storage, it is recommended to add a carrier protein or stabilizer (e.g. 0.1% BSA, 5% HSA, 10% FBS or 5% Trehalose), and aliquot the reconstituted protein solution to minimize free-thaw cycles.

 | 400-999-6126

 | cn.market@abclonal.com.cn

 | www.abclonal.com.cn

This protein belongs to a member of the insulin family of polypeptide growth factors, which are involved in development and growth. It is an imprinted gene, expressed only from the paternal allele, and epigenetic changes at this locus are associated with Wilms tumour, Beckwith-Wiedemann syndrome, rhabdomyosarcoma, and Silver-Russell syndrome. A read-through *INS-IGF2* gene exists, whose 5' region overlaps the *INS* gene and the 3' region overlaps this gene. Alternatively spliced transcript variants encoding different isoforms have been found for this gene.

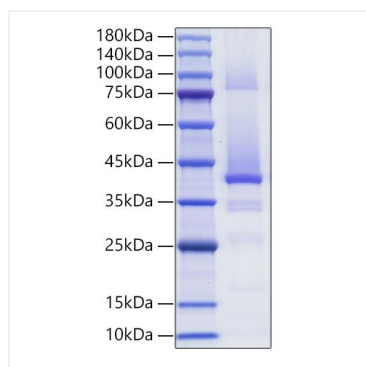
Recombinant Human IGF-II Protein is produced by HEK293 cells expression system. The target protein is expressed with sequence (Ala25-Glu91) of human IGF2 (Accession #P01344)fused with a hFc tag at the C-terminus.

Store at -20°C. Store the lyophilized protein at -20°C to -80 °C up to 1 year from the date of receipt.

After reconstitution, the protein solution is stable at -20°C for 3 months, at 2-8°C for up to 1 week.

Avoid repeated freeze/thaw cycles.

Validation Data



Recombinant Human IGF-II Protein was determined by SDS-PAGE under reducing conditions with Coomassie Blue.