

Recombinant Human CCL19/MIP-3 beta Protein

Catalog No.: RP01832 **Recombinant**

Sequence Information

Species	Gene ID	Swiss Prot
Human	6363	Q99731

Tags

C-His

Synonyms

ELC; CKb11; MIP3B; MIP-3b;
SCYA19;CCL19;MIP-3 beta

Product Information

Source	Purification
HEK293 cells	> 92% by SDS-PAGE.

Endotoxin

< 0.1 EU/μg

Formulation

Lyophilized from a 0.22 μm filtered solution of PBS, pH 7.4.

Reconstitution

Centrifuge the vial before opening.
Reconstitute to a concentration of 0.1-0.5 mg/mL in sterile distilled water.
Avoid vortex or vigorously pipetting the protein. For long term storage, it is recommended to add a carrier protein or stabilizer (e.g. 0.1% BSA, 5% HSA, 10% FBS or 5% Trehalose), and aliquot the reconstituted protein solution to minimize freeze-thaw cycles.

Background

C-C motif chemokine 19(CCL19) is as known as CK beta-11, ELC, MIP3B and SCYA19. May play a role not only in inflammatory and immunological responses but also in normal lymphocyte recirculation and homing. May play an important role in trafficking of T-cells in thymus, and T-cell and B-cell migration to secondary lymphoid organs. Binds to chemokine receptor CCR7. Recombinant CCL19 shows potent chemotactic activity for T-cells and B-cells but not for granulocytes and monocytes. Binds to atypical chemokine receptor ACKR4 and mediates the recruitment of beta-arrestin (ARRB1/2) to ACKR4.

Basic Information

Description

Recombinant Human CCL19/MIP-3 beta Protein is produced by HEK293 cells expression system. The target protein is expressed with sequence (Gly22-Ser98) of human CCL19/MIP-3 beta (Accession #NP_006265.1) fused with a 6×His tag at the C-terminus.

Bio-Activity

Storage

Store the lyophilized protein at -20°C to -80°C for 12 months.
After reconstitution, the protein solution is stable at -20°C for 3 months, at 2-8°C for up to 1 week.
Avoid repeated freeze/thaw cycles.

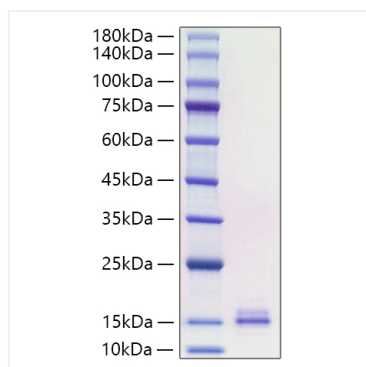
Contact

☎ | 400-999-6126

✉ | cn.market@abclonal.com.cn

🌐 | www.abclonal.com.cn

Validation Data



Recombinant Human CCL19/MIP-3 beta Protein was determined by SDS-PAGE with Coomassie Blue, showing a band at 15-25 kDa.