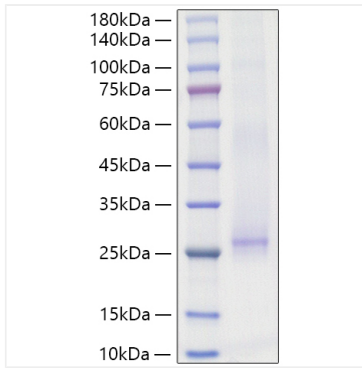
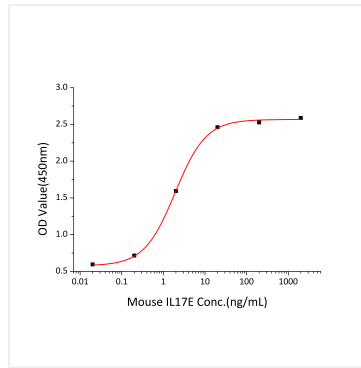


Validation Data



Recombinant Mouse IL-25/IL-17E Protein was determined by SDS-PAGE under reducing conditions with Coomassie Blue.



Recombinant Mouse IL-25/IL-17E Protein induce CXCL1/GRO alpha secretion in HT-29 human colon adenocarcinoma cells. The ED_{50} for this effect is 0.96-3.83 ng/mL, corresponding to a specific activity of $2.61 \times 10^5 \sim 1.04 \times 10^6$ units/mg.