

Catalog No.: RP01741 **Recombinant**

Species	Gene ID	Swiss Prot
Rat	24498	P20607

C-His

IL6; Ifnb2 IL-6 IL6

Source	Purification
HEK293 cells	≥ 95 % as determined by SDS-PAGE

Calculated MW	Observed MW
21.73 kDa	25-35 kDa

< 0.1 EU/μg of the protein by LAL method.

Lyophilized from a 0.22 μm filtered solution of PBS, pH 7.4.

Centrifuge the vial before opening. Reconstitute to a concentration of 0.1-0.5 mg/mL in sterile distilled water. Avoid vortex or vigorously pipetting the protein. For long term storage, it is recommended to add a carrier protein or stabilizer (e.g. 0.1% BSA, 5% HSA, 10% FBS or 5% Trehalose), and aliquot the reconstituted protein solution to minimize free-thaw cycles.

 | 400-999-6126

✉ | cn.market@abclonal.com.cn

 | www.abclonal.com.cn

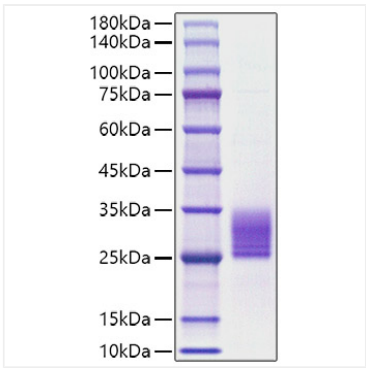
Interleukin-6 is a multifunctional α -helical cytokine that regulates cell growth and differentiation of various tissues, which is known particularly for its role in the immune response and acute phase reactions. It is secreted by T cells, macrophages, monocytes, fibroblasts, endothelial cells, et al. to stimulate immune response to trauma, especially burns or other tissue damage leading to inflammation. Interleukin 6 has been shown to interact with interleukin-6 receptor and glycoprotein. IL-6 is relevant to many disease processes such as diabetes, atherosclerosis, depression, Alzheimer's Disease, systemic, lupus erythematosus, prostate cancer and rheumatoid arthritis.

Recombinant Rat IL-6 Protein is produced by HEK293 cells expression system. The target protein is expressed with sequence (Phe25-Thr211) of rat IL-6 (Accession #NP_036721.1) fused with a 6×His tag at the C-terminus.

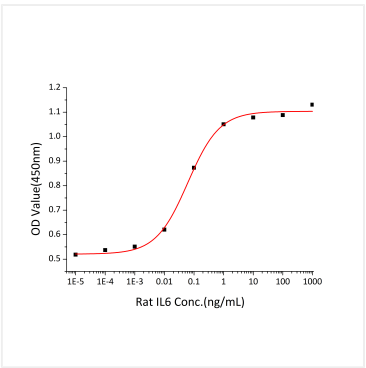
1. Measured in a cell proliferation assay using NFS-60 mouse myelogenous leukemia lymphoblast cells. The ED₅₀ for this effect is 30-123 pg/mL.

Store at -20°C. Store the lyophilized protein at -20°C to -80 °C up to 1 year from the date of receipt.
After reconstitution, the protein solution is stable at -20°C for 3 months, at 2-8°C for up to 1 week.
Avoid repeated freeze/thaw cycles.

Validation Data



Recombinant Rat IL-6 Protein was determined by SDS-PAGE under reducing conditions with Coomassie Blue.



Recombinant Rat IL-6 stimulates cell proliferation of the NFS-60 mouse myelogenous leukemia lymphoblast cells. The ED₅₀ for this effect is 30-123 pg/mL.