

**Catalog No.: RP01688** **Recombinant**

| Species | Gene ID | Swiss Prot |
|---------|---------|------------|
| Human   | 3569    | P05231     |

## NO-tag

**Synonyms**  
CDF; HGF; HSF; BSF2; IL-6; BSF-2; IFNB2;  
IFN-beta-2

|               |                                  |
|---------------|----------------------------------|
| <b>Source</b> | <b>Purification</b>              |
| HEK293 cells  | ≥ 95 % as determined by SDS-PAGE |

< 0.1 EU/μg of the protein by LAL method.

Lyophilized from a 0.22  $\mu\text{m}$  filtered solution of PBS, pH 7.4.

Centrifuge the vial before opening. Reconstitute to a concentration of 0.1-0.5 mg/mL in sterile distilled water. Avoid vortex or vigorously pipetting the protein. For long term storage, it is recommended to add a carrier protein or stabilizer (e.g. 0.1% BSA, 5% HSA, 10% FBS or 5% Trehalose), and aliquot the reconstituted protein solution to minimize free-thaw cycles.

 | 400-999-6126

 | [cn.market@abclonal.com.cn](mailto:cn.market@abclonal.com.cn)

 | [www.abclonal.com.cn](http://www.abclonal.com.cn)

Interleukin-6 is a multifunctional  $\alpha$ -helical cytokine that regulates cell growth and differentiation of various tissues, which is known particularly for its role in the immune response and acute phase reactions. It is secreted by T cells, macrophages, monocytes, fibroblasts, endothelial cells, et al. to stimulate immune response to trauma, especially burns or other tissue damage leading to inflammation. Interleukin 6 has been shown to interact with interleukin-6 receptor and glycoprotein. IL-6 is relevant to many disease processes such as diabetes, atherosclerosis, depression, Alzheimer's Disease, systemic, lupus erythematosus, prostate cancer and rheumatoid arthritis.

Active Recombinant Human IL6 Protein is produced by HEK293 cells expression system. The target protein is expressed with sequence (Val30-Met212) of human IL6 (Accession #NP\_000591.1) fused with no additional amino acid.

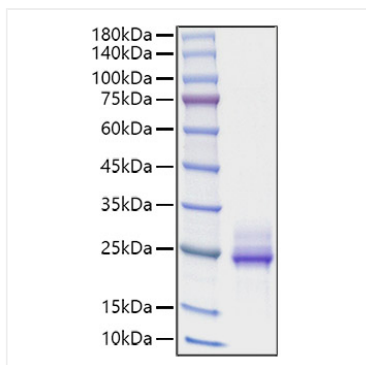
Measured in a cell proliferation assay using TF-1 human erythroleukemic cells. The ED<sub>50</sub> for this effect is 0.12-0.47 ng/mL.

**Storage**  
Store at -20°C. Store the lyophilized protein at -20°C to -80 °C up to 1 year from the date of receipt.

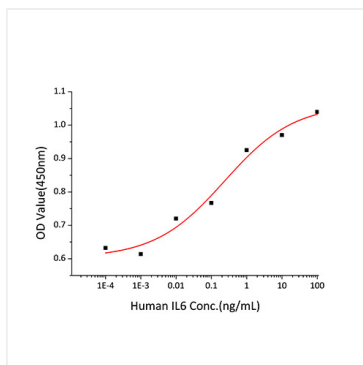
After reconstitution, the protein solution is stable at -20°C for 3 months, at 2-8°C for up to 1 week.

Avoid repeated freeze/thaw cycles.

## Validation Data



Recombinant Human IL-6 Protein was determined by SDS-PAGE under reducing conditions with Coomassie Blue.



Recombinant Human IL6 stimulates cell proliferation of the TF-1 human erythroleukemic cells. The ED<sub>50</sub> for this effect is 0.12-0.47 ng/mL.