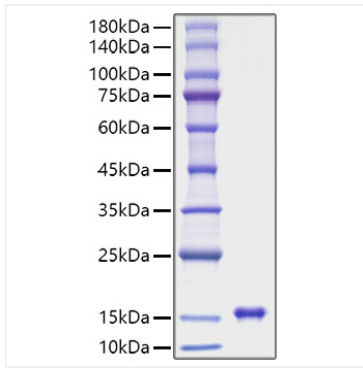
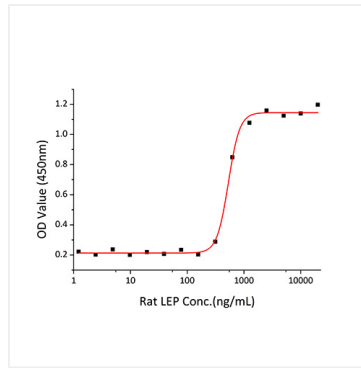


Validation Data



Recombinant Rat Leptin/LEP Protein was determined by SDS-PAGE under reducing conditions with Coomassie Blue.



Immobilized Human LEPR (Catalog: RP01248) at 5 μ g/mL (100 μ L/well) can bind Rat LEP (Catalog: RP01678) with a linear range of 1-530 ng/mL.