

Recombinant Mouse IL-22 Protein

Catalog No.: RP01617 **Recombinant**

Sequence Information

Species	Gene ID	Swiss Prot
Mouse	50929	Q9JJY9

Tags

C-hFc

Synonyms

Interleukin-22; IL-22; Cytokine Zcyto18;
IL-TIF; IL-D110; TIFa; TIFIL-23;
ZCYTO18;IL22

Product Information

Source	Purification
HEK293 cells	> 95% by SDS-PAGE.

Endotoxin

<0.1EU/μg

Formulation

Lyophilized from a 0.22 μm filtered solution of PBS, pH 7.4.

Reconstitution

Centrifuge the vial before opening.
Reconstitute to a concentration of 0.1-0.5 mg/mL in sterile distilled water. Avoid vortex or vigorously pipetting the protein. For long term storage, it is recommended to add a carrier protein or stabilizer (e.g. 0.1% BSA, 5% HSA, 10% FBS or 5% Trehalose), and aliquot the reconstituted protein solution to minimize freeze-thaw cycles.

Background

The cytokine interleukin-22 (IL-22) is a critical regulator of epithelial homeostasis. It has been implicated in multiple aspects of epithelial barrier function, including regulation of epithelial cell growth and permeability, production of mucus and antimicrobial proteins (AMPs), and complement production.

Basic Information

Description

Recombinant Mouse IL-22 Protein is produced by HEK293 cells expression system. The target protein is expressed with sequence (Leu34-Val179) of mouse IL-22 (Accession #NP_058667.1) fused with and a hFc tag at the C-terminus.

Bio-Activity

Measured by its ability to induce IL-10 secretion in COLO 205 human colorectal adenocarcinoma cells. The ED₅₀ for this effect is 150-600 ng/mL.

Storage

Store the lyophilized protein at -20°C to -80°C for 12 months.
After reconstitution, the protein solution is stable at -20°C for 3 months, at 2-8°C for up to 1 week.
Avoid repeated freeze/thaw cycles.

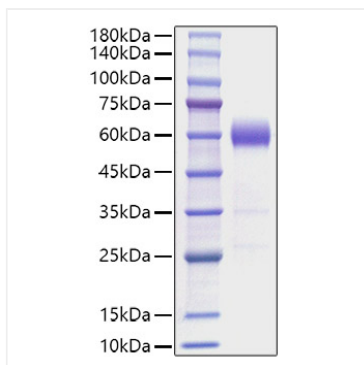
Contact

☎ | 400-999-6126

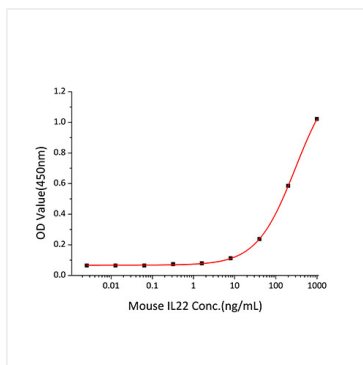
✉ | cn.market@abclonal.com.cn

🌐 | www.abclonal.com.cn

Validation Data



Recombinant Mouse IL-22 Protein was determined by SDS-PAGE with Coomassie Blue, showing a band at 60-68 kDa.



Recombinant Mouse IL-22 induce IL-10 secretion in COLO 205 human colorectal adenocarcinoma cells. The ED_{50} for this effect is 150-600 ng/mL.