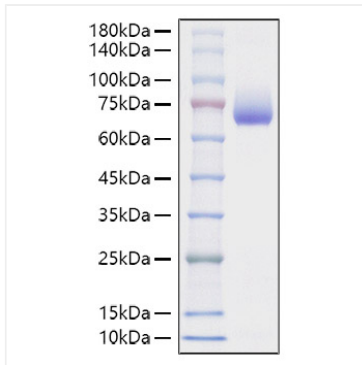


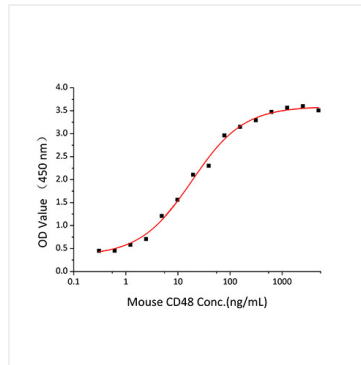


## Validation Data

---



Recombinant Mouse SLAMF2/CD48 Protein was determined by SDS-PAGE under reducing conditions with Coomassie Blue.



Immobilized Mouse CD48 (Catalog: RP01591) at 10  $\mu$ g/mL (100  $\mu$ L/well) can bind Human CD224 (Catalog: RP00167) with a linear range of 0.87-18.4 ng/mL.