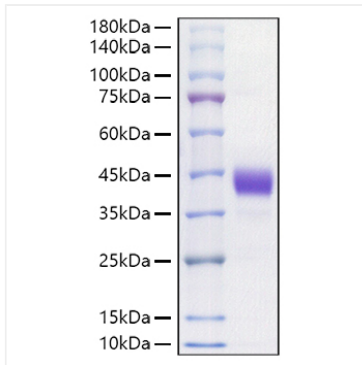


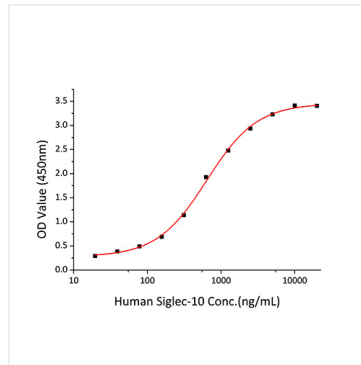


## Validation Data

---



Recombinant Mouse CD52 Protein was determined by SDS-PAGE under reducing conditions with Coomassie Blue.



Immobilized Mouse CD52 at 10  $\mu\text{g/mL}$  (100  $\mu\text{L/well}$ ) can bind Human Siglec-10 with a linear range of 0.3-642 ng/mL.