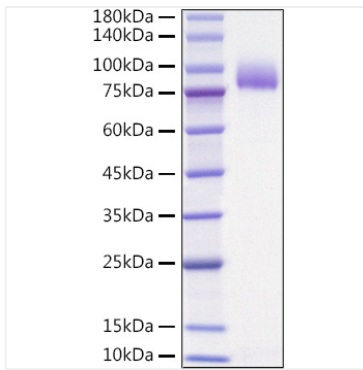
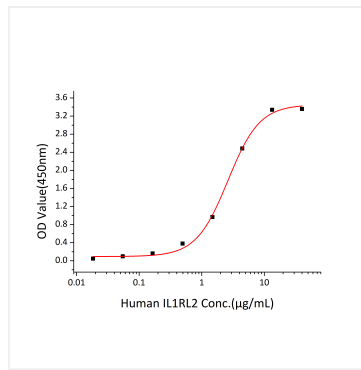


Validation Data



Recombinant Human IL-1 Rrp2/IL-1 R6
Protein was determined by SDS-PAGE under reducing conditions with Coomassie Blue.



Immobilized human IL-36 beta (Catalog: RP00020) at 10 µg/mL (100 µL/well) can bind human IL1RL2(Catalog: RP01547) with a linear range of 0.018-2.62 µg/mL.