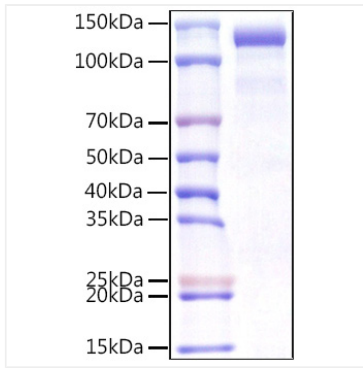


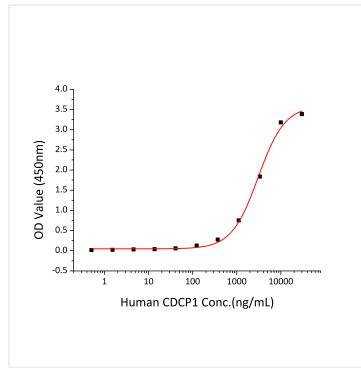


## Validation Data

---



Recombinant Human CDCP1/gp140/CD318 Protein was determined by SDS-PAGE under reducing conditions with Coomassie Blue.



Immobilized Human CDH3 (Catalog #RP01491) at 5  $\mu\text{g/mL}$  (100  $\mu\text{L}$ /well) can bind Human CDCP1 (Catalog #RP01539) with a linear range of 0.37-3.05  $\mu\text{g/mL}$ .