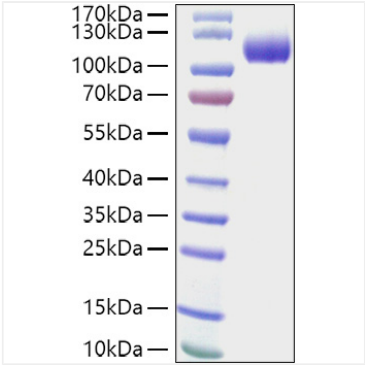
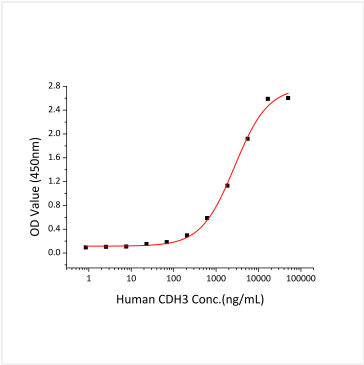


Catalog No.: RP01450 **Recombinant**

Validation Data



Recombinant Human CDCP1/gp140/CD318 Protein was determined by SDS-PAGE under reducing conditions with Coomassie Blue.



Immobilized Human CDCP1 (Catalog #RP01450) at 1 μ g/mL (100 μ L/well) can bind Human CDH3 (Catalog #RP01491) with a linear range of 0.2-2.72 μ g/mL.