

**Catalog No.: RP01448** **Recombinant**

Species	Gene ID	Swiss Prot
Mouse	56047	O61468-1

## C-His

MSLN:Mesothelin:MPF:MSLN

<b>Source</b>	<b>Purification</b>
HEK293 cells	≥ 95 % as determined by SDS-PAGE

34.99 kDa                      40-50 kDa

< 0.1 EU/μg of the protein by LAL method.

Lyophilized from a 0.22  $\mu\text{m}$  filtered solution of PBS, pH 7.4.

Centrifuge the vial before opening. Reconstitute to a concentration of 0.1-0.5 mg/mL in sterile distilled water. Avoid vortex or vigorously pipetting the protein. For long term storage, it is recommended to add a carrier protein or stabilizer (e.g. 0.1% BSA, 5% HSA, 10% FBS or 5% Trehalose), and aliquot the reconstituted protein solution to minimize free-thaw cycles.

 | 400-999-6126

 | [cn.market@abclonal.com.cn](mailto:cn.market@abclonal.com.cn)

 | [www.abclonal.com.cn](http://www.abclonal.com.cn)

The megakaryocyte potentiating factor belongs to the mesothelin family. This family is comprised of several mammalian pre-pro-megakaryocyte potentiating factor precursor (MPF) or mesothelin proteins. Mesothelin is a glycosylphosphatidylinositol-linked glycoprotein highly expressed in mesothelial cells, mesotheliomas, and ovarian cancer, but the biological function of the protein is not known. Megakaryocyte potentiating factor is highly expressed in mesotheliomas, ovarian cancers, and some squamous cell carcinomas (at protein level). It interacts with MUC16 and potentiates megakaryocyte colony formation in vitro. Megakaryocyte potentiating factor is secreted by several mesothelioma cell lines and is frequently elevated in the blood of patients with mesothelioma. Measurement of this protein may be useful in following the response of mesothelioma to treatment.

Recombinant Mouse Mesothelin/MSLN Protein is produced by HEK293 cells expression system. The target protein is expressed with sequence (Asp298-Ser600) of mouse MSLN/Mesothelin (Accession #NP\_061345.1) fused with a 6×His tag at the C-terminus.

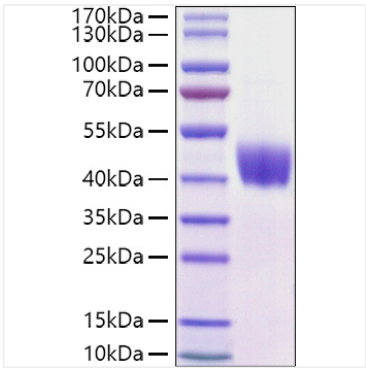
Measured by its binding ability in a functional ELISA. Immobilized Mouse Mesothelin/MSLN (Catalog: RP01448) at 2 µg/mL (100 µL/well) can bind Human CA125 (Catalog: RP01444) with a linear range of 0.01-0.72 ng/mL.

Store at -20°C. Store the lyophilized protein at -20°C to -80 °C up to 1 year from the date of receipt.

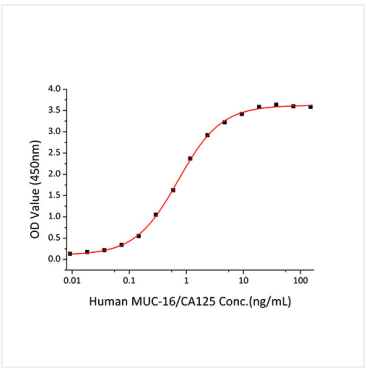
After reconstitution, the protein solution is stable at -20°C for 3 months, at 2-8°C for up to 1 week.

Avoid repeated freeze/thaw cycles.

Validation Data



Recombinant Mouse Mesothelin/MSLN  
Protein was determined by SDS-PAGE under reducing conditions with Coomassie Blue.



Immobilized Mouse Mesothelin/MSLN at 2  
μg/mL (100 μL/well) can bind Human CA125  
with a linear range of 0.01-0.72 ng/mL.